



LENTOR MANSION



BEYOND THE ESTATE

CONNECTIVITY

Lentor MRT Station VIA SHELTERED WALKWAY

Mayflower MRT Station

Yio Chu Kang MRT Station

North-South Corridor (U/C)

Seletar Expressway (SLE)

Central Expressway (CTE)

5-min

5-min

5-min

2-min

11-min

22-min

NOTABLE SCHOOLS

Anderson Primary School (0.9km)

CHIJ St Nicholas Girls' School (0.95km)

Mayflower Primary School (1.3km)

Presbyterian High School (1.1km)

Nanyang Polytechnic (1.6km)

Mayflower Secondary School (1.6km)

Anderson Serangoon Junior College (1.4km)

Anderson Secondary School (2.2km)

ITE College Central (2.8km)

3-min

4-min

4-min

5-min

6-min

6-min

6-min

6-min

7-min

SHOPPING & DINING

Lentor Modern Mall

AMK Hub

Springleaf Eateries

Thomson Plaza

Upper Thomson Eateries

Junction 8

Northpoint City

5-min

6-min

7-min

9-min

9-min

11-min

13-min

NATURE

Hillock Park

Thomson Nature Park

Lower Peirce Reservoir Park

Windsor Nature Park

Bishan-Ang Mo Kio Park

Mandai Wildlife Reserve

1-min

4-min

7-min

9-min

10-min

18-min

LEGEND

NORTH-SOUTH LINE

THOMSON-EAST COAST LINE

CIRCLE LINE

CROSS ISLAND LINE (U/C)

DOWNTOWN LINE

LANDED ESTATE

CYCLING PATH

PARK CONNECTORS

*The estimated traveling time is based on OneMap. Distance is calculated based on the linear distance on OneMap. Map is for illustration purposes only and is not drawn to scale.



A white sports car is parked on a paved driveway in front of a modern house. The house features a prominent checkered wall on the left and a large, leafy tree in the center. The car is positioned in the lower left foreground, facing right. The house has a two-story structure with a red-tiled roof and large glass windows. The scene is set in a lush, green environment with many trees and plants. The text "MAKE AN ENTRANCE AS YOU ARRIVE HOME" is overlaid on the upper left portion of the image.

MAKE AN ENTRANCE
AS YOU ARRIVE HOME

The idyllic mansion lifestyle comes to life at the sprawling estate of Lentor Mansion. Situated on the largest and lowest density site in the entire Lentor district to date, Lentor Mansion spans close to 22,000 square metres. This generous space guarantees residents the luxury of ample room and privacy, a distinctive advantage of low-density living.

Comprising a wide variety of facilities — including a Grand Lawn, a 223-metre Forest Trail, and a Tots Club — spread across various zones, the estate caters to diverse interests. With the many thoughtfully designed amenities at Lentor Mansion, residents and families can foster active and healthy lifestyles.



FOR ILLUSTRATION PURPOSES ONLY.

LENTOR ROOM & DRAWING ROOM

In the beautiful interior spaces of the iconic clubhouse, family and friends come together to share moments and craft lasting memories, further enriching the sense of community at Lentor Mansion.



ARTIST'S IMPRESSION

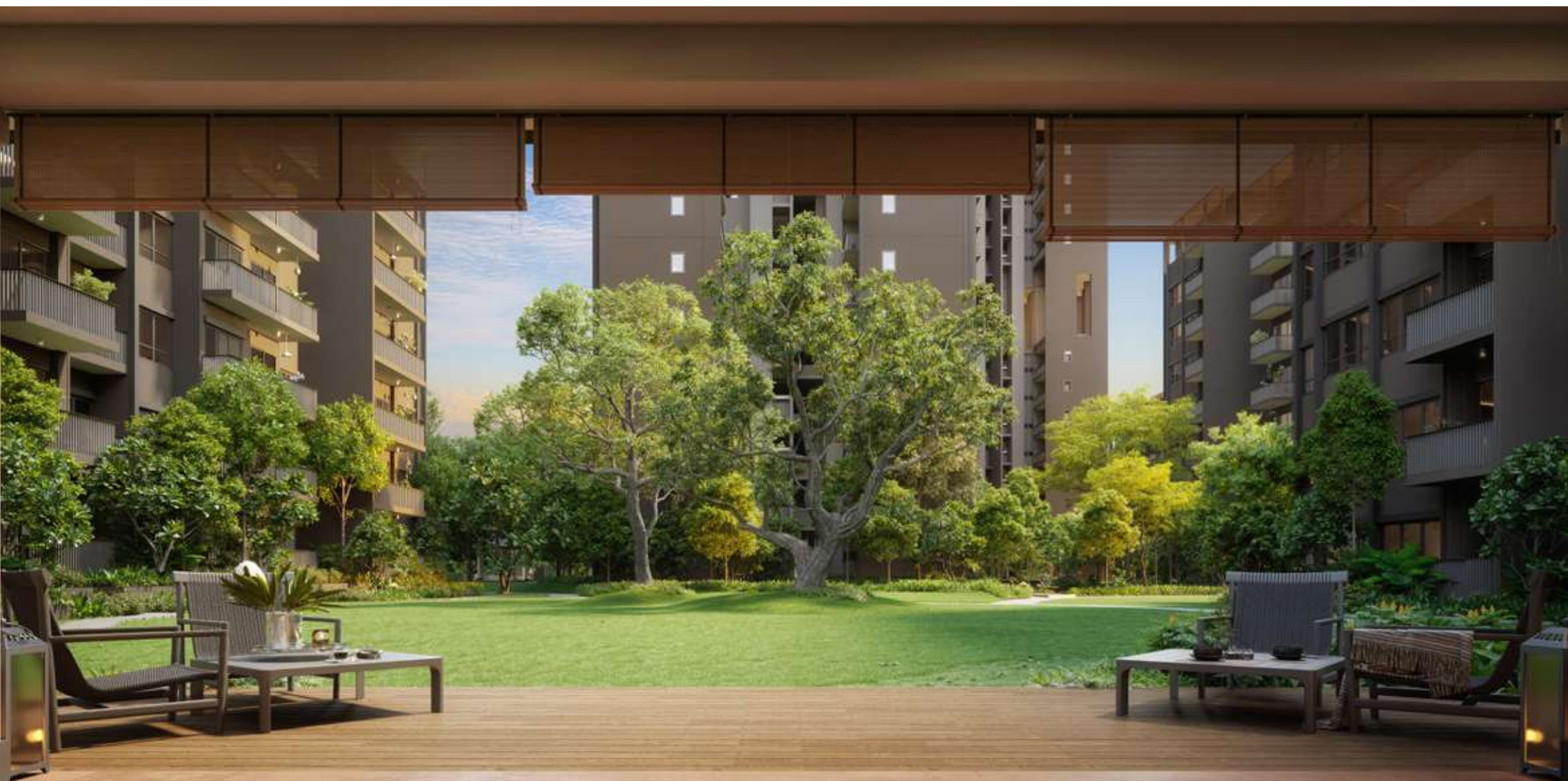
THE VERANDAH

The second floor of the clubhouse opens up to an airy verandah, just like a black-and-white colonial mansion. Life here is idyllic and relaxing. Space, luxury, and tranquillity are not just features; they form the foundation of the Lantor Mansion lifestyle.



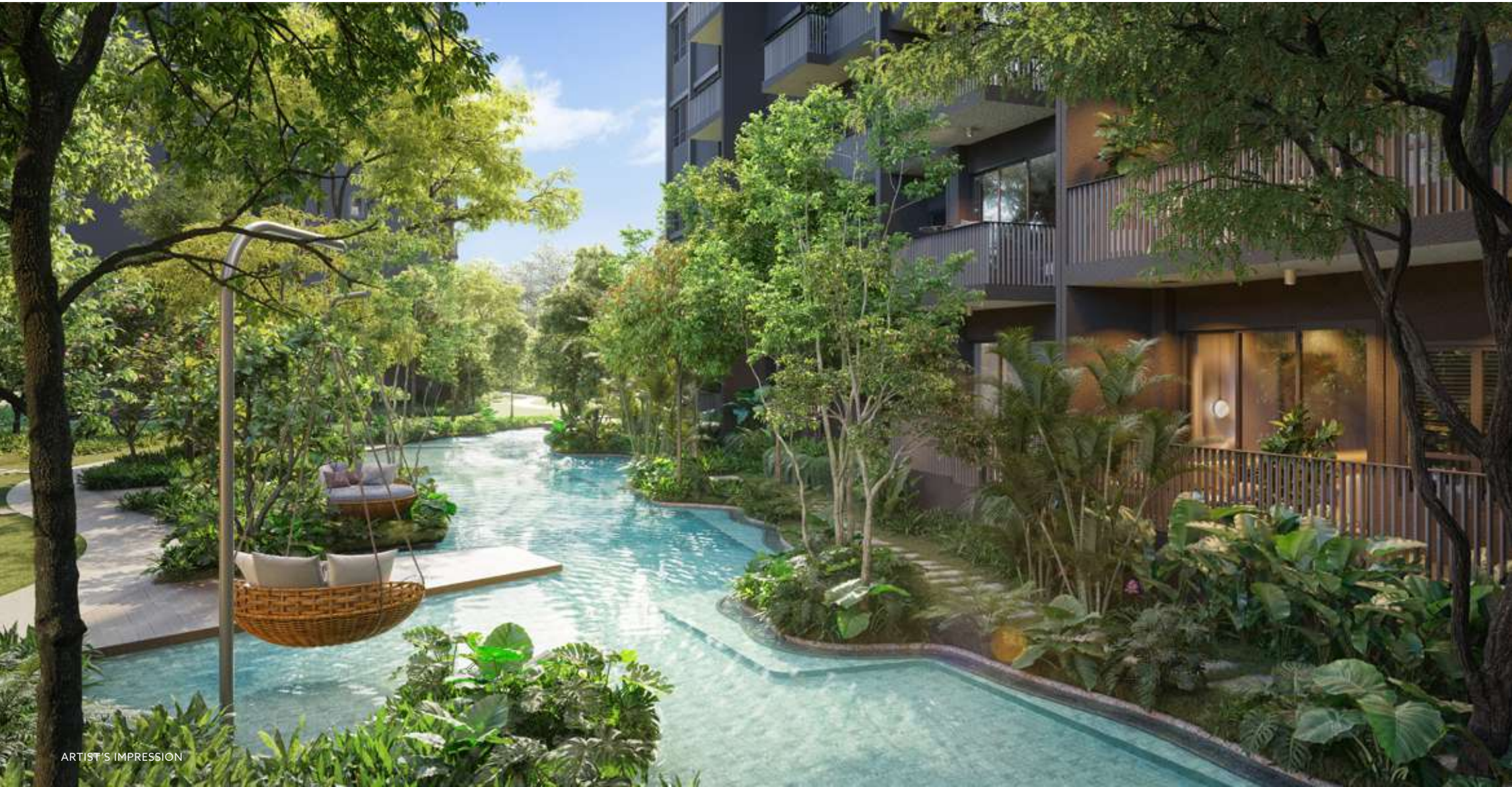
GRAND LAWN

Home at Lantor Mansion is a serene sanctuary away from the hustle and bustle of everyday life, where your dreams find the perfect address.



LEISURE POOL

Surrounded by a forest-inspired landscape, calming waters offer the perfect setting for soaking in quiet moments, such as yoga sessions on the deck.



TOTS CLUB

The lush forest garden fosters a sense of freedom and adventure for the little ones, inviting them to run freely and nurture a love for nature. Here, the garden is an experiential classroom, encouraging learning through direct interaction and exploration of the world.



SITE PLAN



GROUND LEVEL



ALL PLANS ARE SUBJECTED TO AMENDMENTS AS MAY BE APPROVED BY THE RELEVANT AUTHORITIES. BP APPROVAL NO. A1709-00005-2023-BP01 DATED 31/01/2024

GROUND LEVEL

- 1

The Mansion
- 1a

Lentor Room
- 1b

Drawing Room
- 1c

The Verandah
- 1d

The Chamber
- 2

Pool Deck
- 3

50m Pool
- 4

Changing Room with Steam Room
- 5

Gym
- 6

Gym Deck
- 7

Leisure Pool
- 8

Spa Pool
- 9

Spa Alcove
- 10

Spa Deck
- 11

Jacuzzi
- 12

Rainforest Grove
- 13

Rain Garden
- 14

Serenity Pavilion
- 15

Lawn Pavilion
- 16

Grand Lawn
- 17

Day Bed Terrace
- 18

Forest Pavilion
- 19

Forest Swings
- 20

Fern Valley
- 21

Forest Trail
- 22

Wellness Deck
- 23

Forest Camp
- 24

Pet Run
- 25

Pet Pavilion
- 26

Fitness Park
- 27

Fitness Lawn
- 28

Gourmet Pavilion
- 29

Tennis Court
- 30

Tots Club
- 30a

Play Garden
- 30b

Play Pavilion
- 30c

Play Pool
- 30d

Play Lawn
- 30e

Play Ground
- 31

Guard House (Basement 1)
- 32

Boulevard (Basement 1)
- 33

Boulevard Drop Off (Basement 1)
- 34

Grand Drop Off (Basement 1)
- 35

Early Childhood Development Centre (Basement 1)
- 36

Early Childhood Development Centre Outdoor Play Area (Basement 1)
- 37

Bin Centre (Basement 2)
- 38

Substation (Basement 1 & Basement 2)
- Water Tank

9TH STOREY



9TH STOREY

- TOWER 60

39

Cabana Terrace
- 40

Sky Lounge
- 41

Chill Out Terrace
- 42

Social Terrace
- 43

Work Terrace
- TOWER 62

44

Cabana Terrace
- 45

Sky Lounge
- 46

Chill Out Terrace
- 47

Social Terrace
- 48

Work Terrace
- TOWER 64

49

Cabana Terrace
- 50

Sky Lounge
- 51

Chill Out Terrace
- 52

Social Terrace
- 53

Work Terrace

UNIT DISTRIBUTION

BLOCK 60									BLOCK 62									BLOCK 64								
UNIT FLOOR	23	24	25	26	27	28	29	30	31	32	33	34	35	36	37	38	39	40	41	42	43	44	45	46		
16	D1	C1	B2	E1	D2	C1	B2	E2	C8	B2	B1	E1	D2	B2	B1	C4	D1	B2	B1	C5	D2	B1	B1	C8		
15	D1	C1	B2	E1	D2	C1	B2	E2	C8	B2	B1	E1	D2	B2	B1	C4	D1	B2	B1	C5	D2	B1	B1	C8		
14	D1	C1	B2	E1	D2	C1	B2	E2	C8	B2	B1	E1	D2	B2	B1	C4	D1	B2	B1	C5	D2	B1	B1	C8		
13	D1	C1	B2	E1	D2	C1	B2	E2	C8	B2	B1	E1	D2	B2	B1	C4	D1	B2	B1	C5	D2	B1	B1	C8		
12	D1	C1	B2	E1	D2	C1	B2	E2	C8	B2	B1	E1	D2	B2	B1	C4	D1	B2	B1	C5	D2	B1	B1	C8		
11	D1	C1	B2	E1	D2	C1	B2	E2	C8	B2	B1	E1	D2	B2	B1	C4	D1	B2	B1	C5	D2	B1	B1	C8		
10	D1	C1	B2	E1	D2	C1	B2	E2	C8	B2	B1	E1	D2	B2	B1	C4	D1	B2	B1	C5	D2	B1	B1	C8		
9	SKY TERRACE								SKY TERRACE								SKY TERRACE									
8	D1	C1	B2	E1	D2	C1	B2	E2	C8	B2	B1	E1	D2	B2	B1	C4	D1	B2	B1	C5	D2	B1	B1	C8		
7	D1	C1	B2	E1	D2	C1	B2	E2	C8	B2	B1	E1	D2	B2	B1	C4	D1	B2	B1	C5	D2	B1	B1	C8		
6	D1	C1	B2	E1	D2	C1	B2	E2	C8	B2	B1	E1	D2	B2	B1	C4	D1	B2	B1	C5	D2	B1	B1	C8		
5	D1	C1	B2	E1	D2	C1	B2	E2	C8	B2	B1	E1	D2	B2	B1	C4	D1	B2	B1	C5	D2	B1	B1	C8		
4	D1	C1	B2	E1	D2	C1	B2	E2	C8	B2	B1	E1	D2	B2	B1	C4	D1	B2	B1	C5	D2	B1	B1	C8		
3	D1	C1	B2	E1	D2	C1	B2	E2	C8	B2	B1	E1	D2	B2	B1	C4	D1	B2	B1	C5	D2	B1	B1	C8		
2	D1	C1	B2	E1	D2	C1	B2	E2	C8	B2	B1	E1	D2	B2	B1	C4	D1	B2	B1	C5	D2	B1	B1	C8		
1	D1-G	C1-G	B2-G	E1-G	D2-G	C1-G	B2-G	E2-G	C8-G	B2-G	B1-G	E1-G	D2-G	B2-G	B1-G	C4-G	D1-G	B2-G	B1-G	C5-G	D2-G	B1-G	B1-G	C8-G		
B1	RESIDENTIAL CARPARK																									
B2	RESIDENTIAL CARPARK																									

BLOCK 58								BLOCK 56						BLOCK 52								
UNIT FLOOR	15	16	17	18	19	20	21	22	9	10	11	12	13	14	1	2	3	4	5	6	7	8
8	C4	C1	B2	C7	C2	C1	B1	C8	C3	B2	C8	C6	B1	C3	C7	B2	B1	C8	C2	B2	B1	C5
7	C4	C1	B2	C7	C2	C1	B1	C8	C3	B2	C8	C6	B1	C3	C7	B2	B1	C8	C2	B2	B1	C5
6	C4	C1	B2	C7	C2	C1	B1	C8	C3	B2	C8	C6	B1	C3	C7	B2	B1	C8	C2	B2	B1	C5
5	C4	C1	B2	C7	C2	C1	B1	C8	C3	B2	C8	C6	B1	C3	C7	B2	B1	C8	C2	B2	B1	C5
4	C4	C1	B2	C7	C2	C1	B1	C8	C3	B2	C8	C6	B1	C3	C7	B2	B1	C8	C2	B2	B1	C5
3	C4	C1	B2	C7	C2	C1	B1		C3	B2	C8	C6	B1	C3	C7	B2	B1	C8	C2	B2	B1	C5
2	C4	C1	B2	C7	C2	C1	B1		C3	B2	C8	C6	B1	C3	C7	B2	B1	C8	C2	B2	B1	C5
1	C4	C1-G	B2-G	C7-G	C2-G	C1-G	B1-G		C3-G	B2-G	C8-G	C6-G	B1-G	C3-G	C7-G	B2-G	B1-G	C8-G	C2-G	B2-G	B1-G	C5-G
B1	RESIDENTIAL CARPARK																					
B2	RESIDENTIAL CARPARK																					

LEGEND

Type B1 2 Bedroom (Basic)	Type B2 2 Bedroom (Standard)	Type C1, C2 3 Bedroom (Basic)	Type C3, C4, C5 3 Bedroom (Standard)	Type C6, C7, C8 3 Bedroom (Plus)	Type D1, D2 4 Bedroom (Basic)	Type E1, E2 5 Bedroom (Standard)
------------------------------	---------------------------------	----------------------------------	---	-------------------------------------	----------------------------------	-------------------------------------

2 BEDROOM



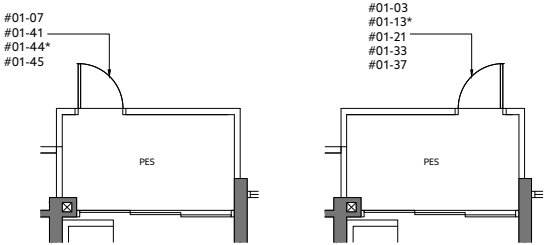
TYPE B1-G	49 sq m / 527 sq ft
	INCLUSIVE OF 4 SQM PES
TOWER	UNIT
52	#01-03, #01-07
56	#01-13*
58	#01-21
62	#01-33, #01-37
64	#01-41, #01-44*, #01-45

TYPE B1	49 sq m / 527 sq ft
	INCLUSIVE OF 4 SQM BALCONY
TOWER	UNIT
52	#02-03 to #08-03
	#02-07 to #08-07
56	#02-13* to #08-13*
58	#02-21 to #08-21
62	#02-33 to #08-33 #10-33 to #16-33
	#02-37 to #08-37 #10-37 to #16-37
64	#02-41 to #08-41 #10-41 to #16-41
	#02-44* to #08-44* #10-44* to #16-44*
	#02-45 to #08-45 #10-45 to #16-45

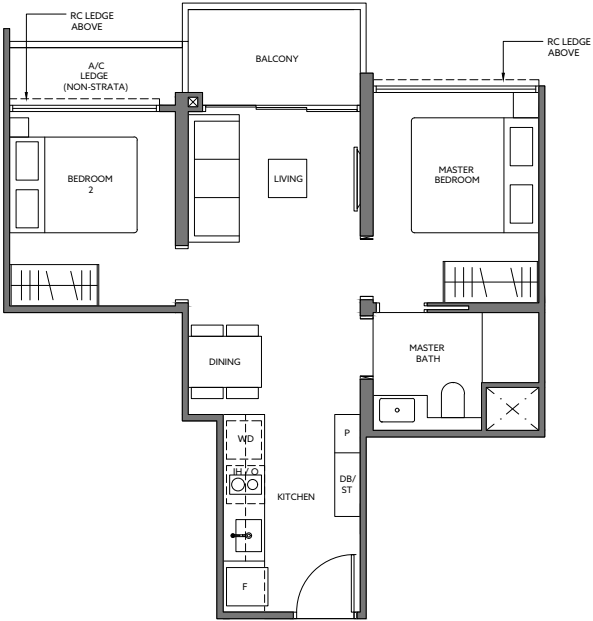
* MIRROR IMAGE

LEGEND (where applicable)	F - Fridge	WD - Washer Dryer
	P - Pantry	DB - Distribution Board
	O - Oven	ST - Store
	IH - Induction Hob	

ALL PLANS ARE SUBJECTED TO AMENDMENTS AS MAY BE APPROVED BY THE RELEVANT AUTHORITIES.
FLOOR AREAS ARE APPROXIMATE MEASUREMENTS AND ARE SUBJECTED TO FINAL SURVEY.
BP APPROVAL NO. A1709-00005-2023-BP01 DATED 31/01/2024



APPLICABLE TO TYPE B1-G



LENTOR GARDENS

2 BEDROOM



TYPE B2-G 61 sq m / 657 sq ft
INCLUSIVE OF 5 SQM PES

TOWER	UNIT
52	#01-02*, #01-06*
56	#01-10
58	#01-17
60	#01-25, #01-29
62	#01-32*, #01-36*
64	#01-40*

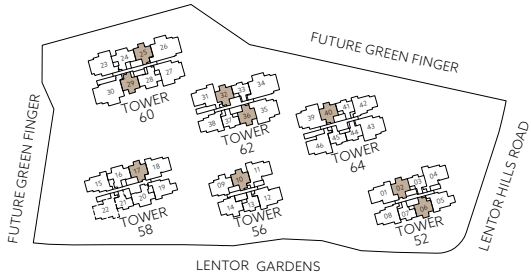
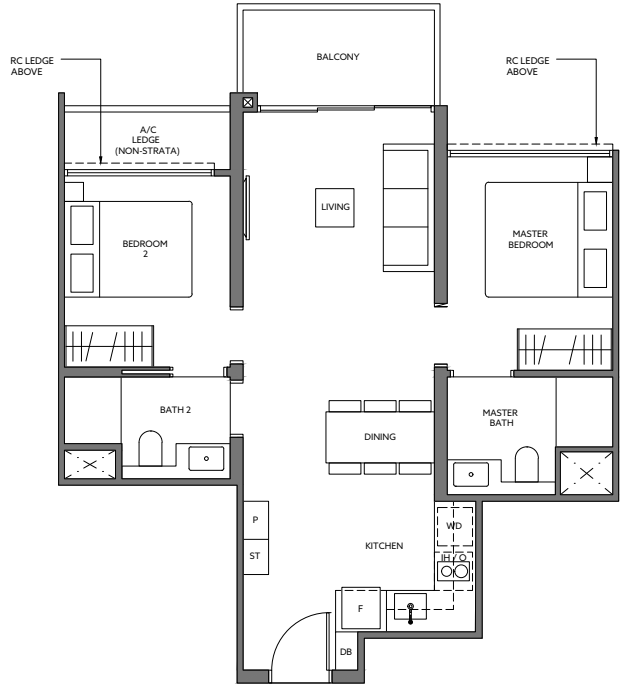
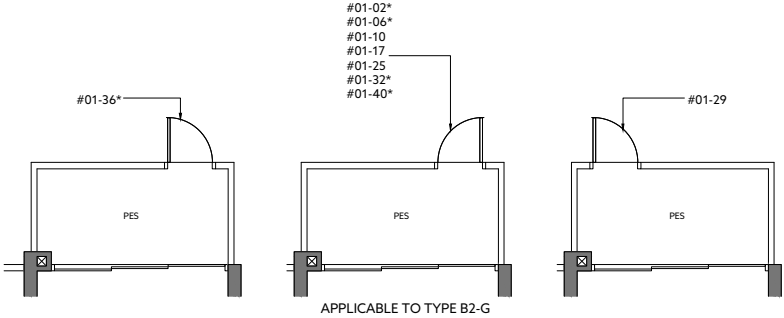
TYPE B2 61 sq m / 657 sq ft
INCLUSIVE OF 5 SQM BALCONY

TOWER	UNIT
52	#02-02* to #08-02* #02-06 to #08-06*
56	#02-10 to #08-10
58	#02-17 to #08-17
60	#02-25 to #08-25 #10-25 to #16-25 #02-29 to #08-29 #10-29 to #16-29
62	#02-32* to #08-32* #10-32* to #16-32* #02-36* to #08-36* #10-36* to #16-36*
64	#02-40* to #08-40* #10-40* to #16-40*

* MIRROR IMAGE

LEGEND (where applicable)	F - Fridge	WD - Washer Dryer
	P - Pantry	DB - Distribution Board
	O - Oven	ST - Store
	IH - Induction Hob	

ALL PLANS ARE SUBJECTED TO AMENDMENTS AS MAY BE APPROVED BY THE RELEVANT AUTHORITIES.
FLOOR AREAS ARE APPROXIMATE MEASUREMENTS AND ARE SUBJECT TO FINAL SURVEY.
BP APPROVAL NO. A1709-00005-2023-BP01 DATED 31/01/2024



3 BEDROOM

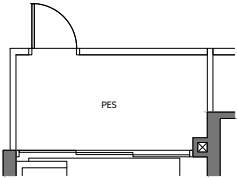


TYPE C1-G 73 sq m / 786 sq ft	
INCLUSIVE OF 5 SQM PES	
TOWER	UNIT
58	#01-16, #01-20
60	#01-24, #01-28

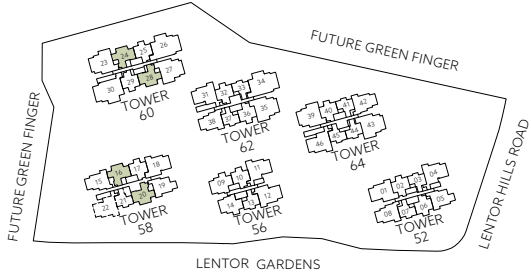
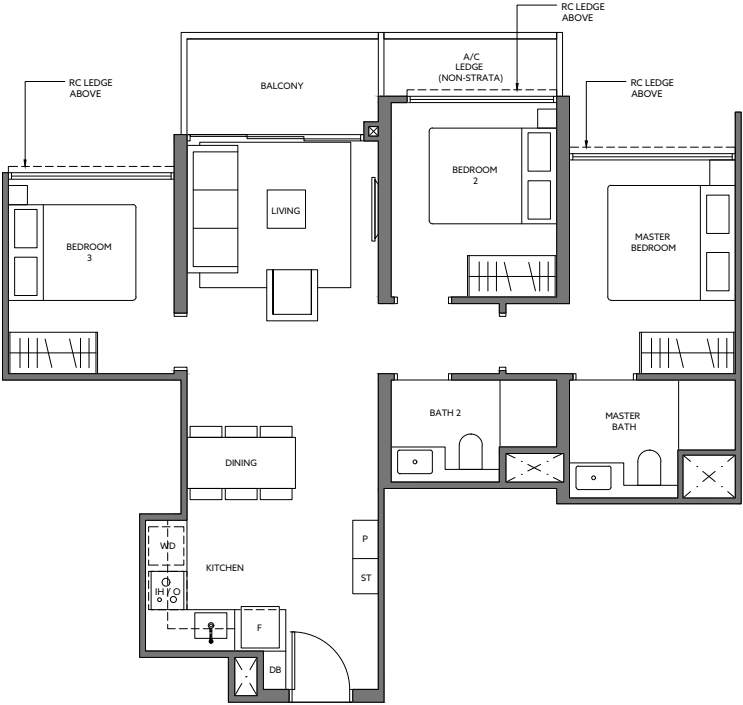
TYPE C1 73 sq m / 786 sq ft	
INCLUSIVE OF 5 SQM BALCONY	
TOWER	UNIT
58	#02-16 to #08-16
	#02-20 to #08-20
60	#02-24 to #08-24 #10-24 to #16-24
	#02-28 to #08-28 #10-28 to #16-28

LEGEND (where applicable)	F - Fridge	WD - Washer Dryer
	P - Pantry	DB - Distribution Board
	O - Oven	ST - Store
	IH - Induction Hob	

ALL PLANS ARE SUBJECTED TO AMENDMENTS AS MAY BE APPROVED BY THE RELEVANT AUTHORITIES.
FLOOR AREAS ARE APPROXIMATE MEASUREMENTS AND ARE SUBJECT TO FINAL SURVEY.
BP APPROVAL NO. A1709-00005-2023-BP01 DATED 31/01/2024



APPLICABLE TO TYPE C1-G



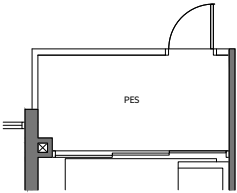
3 BEDROOM

TYPE C2-G 76 sq m / 818 sq ft
INCLUSIVE OF 5 SQM PES

TOWER	UNIT
52	#01-05
58	#01-19

TYPE C2 76 sq m / 818 sq ft
INCLUSIVE OF 5 SQM BALCONY

TOWER	UNIT
52	#02-05 to #08-05
58	#02-19 to #08-19

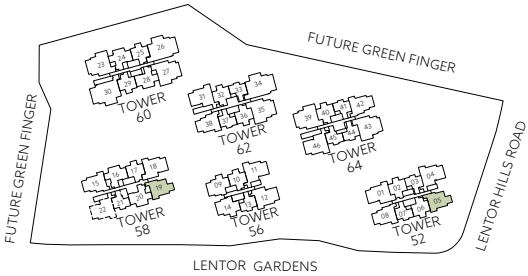


APPLICABLE TO TYPE C2-G



LEGEND (where applicable)	F - Fridge	WD - Washer Dryer
	P - Pantry	DB - Distribution Board
	O - Oven	ST - Store
	IH - Induction Hob	

ALL PLANS ARE SUBJECTED TO AMENDMENTS AS MAY BE APPROVED BY THE RELEVANT AUTHORITIES.
FLOOR AREAS ARE APPROXIMATE MEASUREMENTS AND ARE SUBJECT TO FINAL SURVEY.
BP APPROVAL NO. A1709-00005-2023-BP01 DATED 31/01/2024



3 BEDROOM



TYPE C3-G 80 sq m / 861 sq ft
INCLUSIVE OF 5 SQM PES

TOWER	UNIT
56	#01-09, #01-14*

TYPE C3 80 sq m / 861 sq ft
INCLUSIVE OF 5 SQM BALCONY

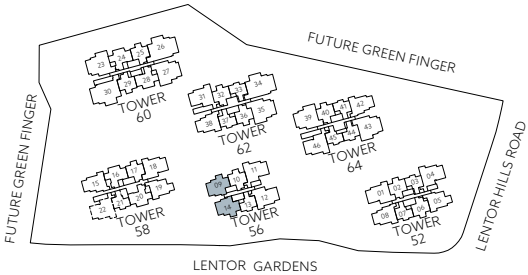
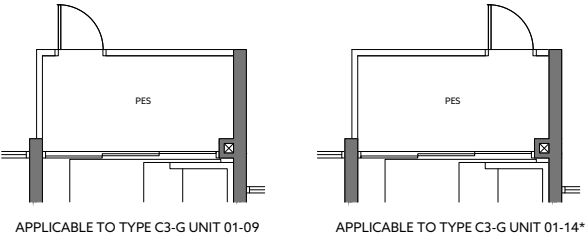
TOWER	UNIT
56	#02-09 to #08-09 #02-14* to #08-14*

* MIRROR IMAGE

- LEGEND**
(where applicable)

 - F - Fridge
 - P - Pantry
 - O - Oven
 - GH- Gas Hob
- WD - Washer Dryer
 - DB - Distribution Board
 - ST - Store

ALL PLANS ARE SUBJECTED TO AMENDMENTS AS MAY BE APPROVED BY THE RELEVANT AUTHORITIES.
FLOOR AREAS ARE APPROXIMATE MEASUREMENTS AND ARE SUBJECT TO FINAL SURVEY.
BP APPROVAL NO. A1709-00005-2023-BP01 DATED 31/01/2024



3 BEDROOM



TYPE C4-G 84 sq m / 904 sq ft
INCLUSIVE OF 5 SQM PES

TOWER	UNIT
58	#01-15
62	#01-38*

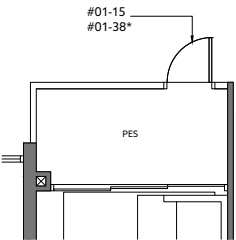
TYPE C4 84 sq m / 904 sq ft
INCLUSIVE OF 5 SQM BALCONY

TOWER	UNIT
58	#02-15 to #08-15
62	#02-38* to #08-38* #10-38* to #16-38*

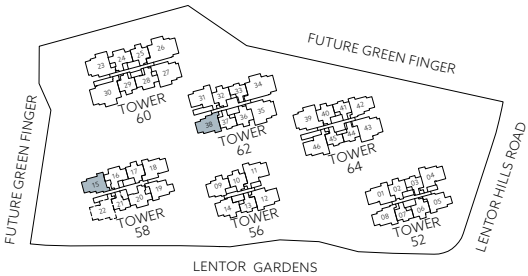
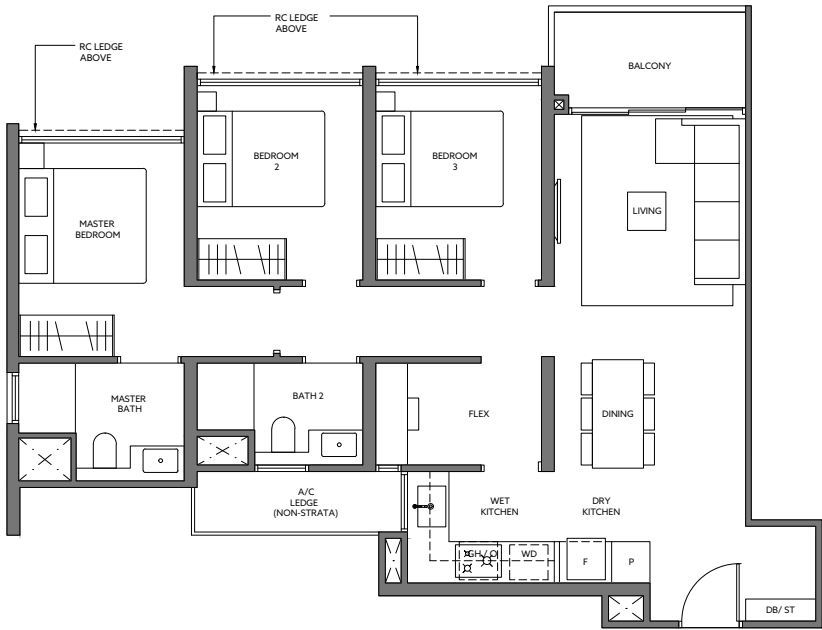
* MIRROR IMAGE

LEGEND (where applicable)	F - Fridge	WD - Washer Dryer
	P - Pantry	DB - Distribution Board
	O - Oven	ST - Store
	GH - Gas Hob	

ALL PLANS ARE SUBJECTED TO AMENDMENTS AS MAY BE APPROVED BY THE RELEVANT AUTHORITIES.
FLOOR AREAS ARE APPROXIMATE MEASUREMENTS AND ARE SUBJECT TO FINAL SURVEY.
BP APPROVAL NO. A1709-00005-2023-BP01 DATED 31/01/2024



APPLICABLE TO TYPE C4-G



3 BEDROOM

TYPE C5-G 84 sq m / 904 sq ft
INCLUSIVE OF 5 SQM PES

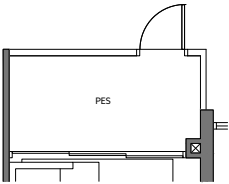
TOWER	UNIT
52	#01-08
64	#01-42

TYPE C5 84 sq m / 904 sq ft
INCLUSIVE OF 5 SQM BALCONY

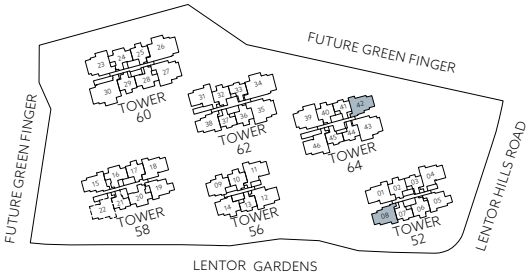
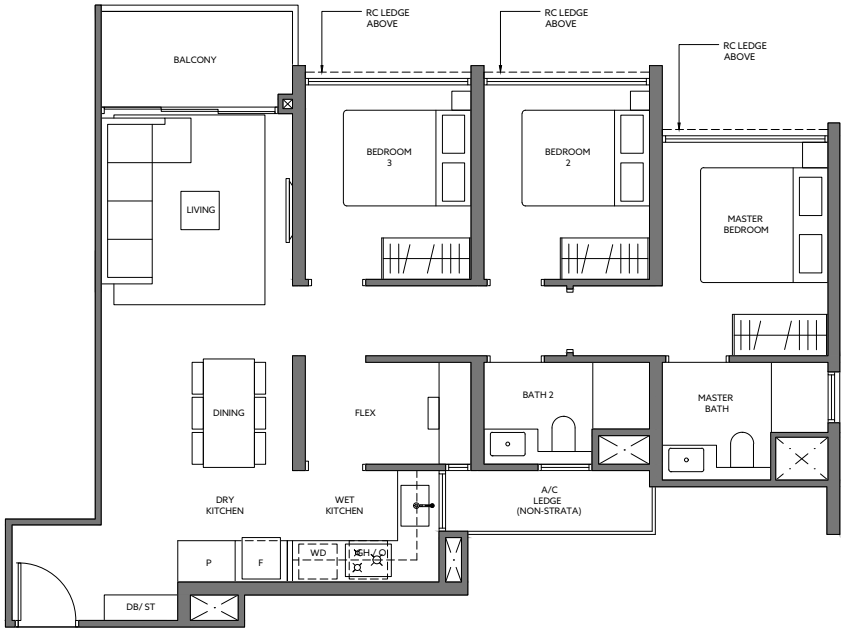
TOWER	UNIT
52	#02-08 to #08-08
64	#02-42 to #08-42 #10-42 to #16-42

LEGEND (where applicable)	F - Fridge	WD - Washer Dryer
	P - Pantry	DB - Distribution Board
	O - Oven	ST - Store
	GH - Gas Hob	

ALL PLANS ARE SUBJECTED TO AMENDMENTS AS MAY BE APPROVED BY THE RELEVANT AUTHORITIES.
FLOOR AREAS ARE APPROXIMATE MEASUREMENTS AND ARE SUBJECT TO FINAL SURVEY.
BP APPROVAL NO. A1709-00005-2023-BP01 DATED 31/01/2024



APPLICABLE TO TYPE C5-G



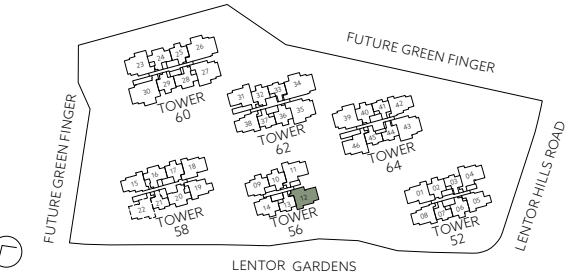
3 BEDROOM



TYPE C6-G 92 sq m / 990 sq ft INCLUSIVE OF 5 SQM PES	
TOWER	UNIT
56	#01-12
TYPE C6 92 sq m / 990 sq ft INCLUSIVE OF 5 SQM BALCONY	
TOWER	UNIT
56	#02-12 to #08-12

LEGEND (where applicable)	F - Fridge	WD - Washer Dryer
	P - Pantry	DB - Distribution Board
	O - Oven	ST - Store
	GH- Gas Hob	

ALL PLANS ARE SUBJECTED TO AMENDMENTS AS MAY BE APPROVED BY THE RELEVANT AUTHORITIES.
FLOOR AREAS ARE APPROXIMATE MEASUREMENTS AND ARE SUBJECT TO FINAL SURVEY.
BP APPROVAL NO. A1709-00005-2023-BP01 DATED 31/01/2024



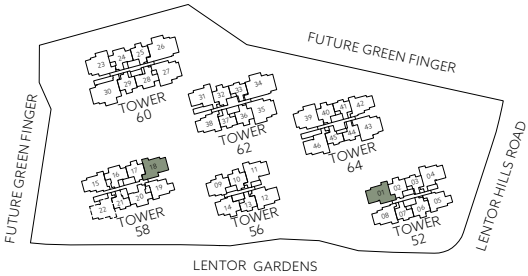
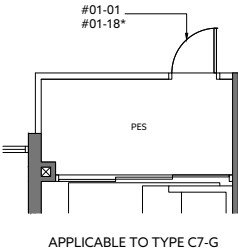
3 BEDROOM

TYPE C7-G		94 sq m / 1012 sq ft
		INCLUSIVE OF 5 SQM PES
TOWER	UNIT	
52	#01-01	
58	#01-18*	
TYPE C7		94 sq m / 1012 sq ft
		INCLUSIVE OF 5 SQM BALCONY
TOWER	UNIT	
52	#02-01 to #08-01	
58	#02-18* to #08-18*	

* MIRROR IMAGE

LEGEND (where applicable)	F - Fridge	WD - Washer Dryer
	P - Pantry	DB - Distribution Board
	O - Oven	ST - Store
	GH- Gas Hob	

ALL PLANS ARE SUBJECTED TO AMENDMENTS AS MAY BE APPROVED BY THE RELEVANT AUTHORITIES.
FLOOR AREAS ARE APPROXIMATE MEASUREMENTS AND ARE SUBJECT TO FINAL SURVEY.
BP APPROVAL NO. A1709-00005-2023-BP01 DATED 31/01/2024



3 BEDROOM

TYPE C8-G 95 sq m / 1023 sq ft
INCLUSIVE OF 5 SQM PES

TOWER	UNIT
52	#01-04
56	#01-11
62	#01-31*
64	#01-46

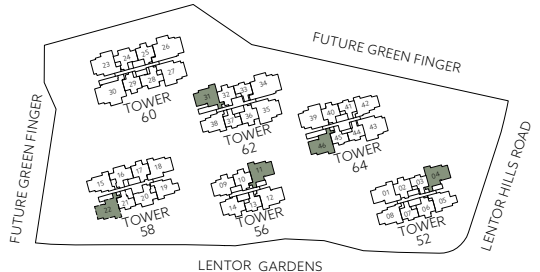
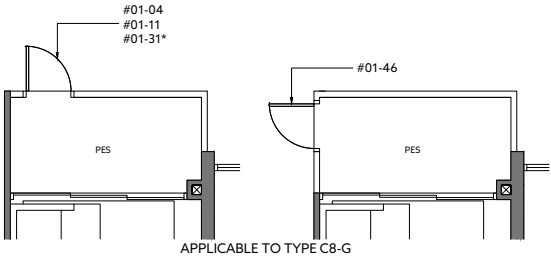
TYPE C8 95 sq m / 1023 sq ft
INCLUSIVE OF 5 SQM BALCONY

TOWER	UNIT
52	#02-04 to #08-04
56	#02-11 to #08-11
58	#04-22 to #08-22
62	#02-31* to #08-31* #10-31* to #16-31*
64	#02-46 to #08-46 #10-46 to #16-46

* MIRROR IMAGE

LEGEND (where applicable)	F - Fridge	WD - Washer Dryer
	P - Pantry	DB - Distribution Board
	O - Oven	ST - Store
	GH - Gas Hob	

ALL PLANS ARE SUBJECTED TO AMENDMENTS AS MAY BE APPROVED BY THE RELEVANT AUTHORITIES.
FLOOR AREAS ARE APPROXIMATE MEASUREMENTS AND ARE SUBJECT TO FINAL SURVEY.
BP APPROVAL NO. A1709-00005-2023-BP01 DATED 31/01/2024

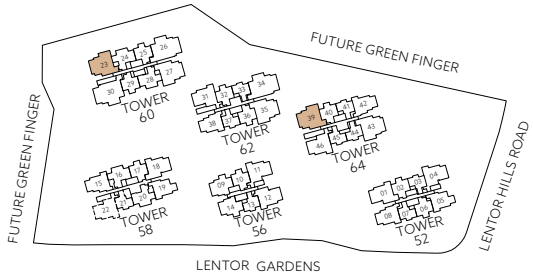
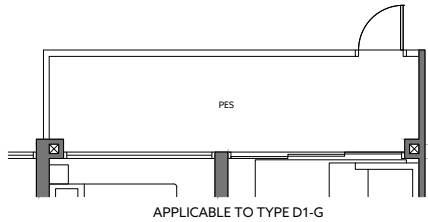


4 BEDROOM

TYPE D1-G	114 sq m / 1227 sq ft		
	INCLUSIVE OF 9 SQM PES		
TOWER	UNIT		
60	#01-23		
64	#01-39		
TYPE D1	114 sq m / 1227 sq ft		
	INCLUSIVE OF 9 SQM BALCONY		
TOWER	UNIT		
60	#02-23 to #08-23 #10-23 to #16-23		
64	#02-39 to #08-39 #10-39 to #16-39		

LEGEND (where applicable)	F - Fridge	WD - Washer Dryer
	P - Pantry	DB - Distribution Board
	O - Oven	ST - Store
	GH- Gas Hob	

ALL PLANS ARE SUBJECTED TO AMENDMENTS AS MAY BE APPROVED BY THE RELEVANT AUTHORITIES.
FLOOR AREAS ARE APPROXIMATE MEASUREMENTS AND ARE SUBJECT TO FINAL SURVEY.
BP APPROVAL NO. A1709-00005-2023-BP01 DATED 31/01/2024



4 BEDROOM



TYPE D2-G 114 sq m / 1227 sq ft
INCLUSIVE OF 9 SQM PES

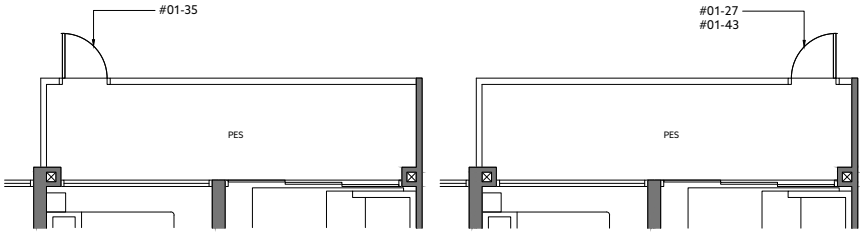
TOWER	UNIT
60	#01-27
62	#01-35
64	#01-43

TYPE D2 114 sq m / 1227 sq ft
INCLUSIVE OF 9 SQM BALCONY

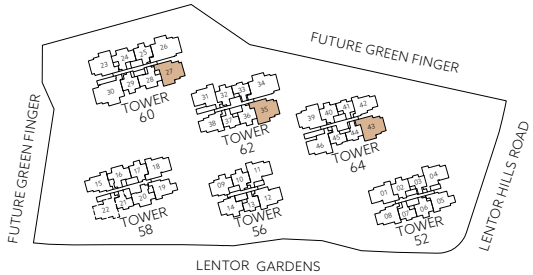
TOWER	UNIT
60	#02-27 to #08-27 #10-27 to #16-27
62	#02-35 to #08-35 #10-35 to #16-35
64	#02-43 to #08-43 #10-43 to #16-43

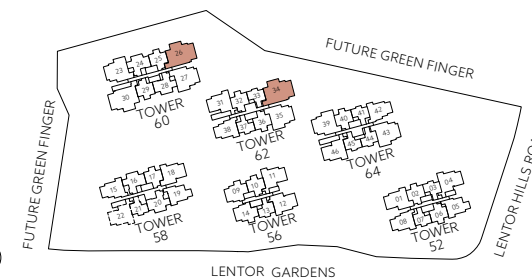
LEGEND (where applicable)	F - Fridge	WD - Washer Dryer
	P - Pantry	DB - Distribution Board
	O - Oven	ST - Store
	GH - Gas Hob	

ALL PLANS ARE SUBJECTED TO AMENDMENTS AS MAY BE APPROVED BY THE RELEVANT AUTHORITIES.
FLOOR AREAS ARE APPROXIMATE MEASUREMENTS AND ARE SUBJECT TO FINAL SURVEY.
BP APPROVAL NO. A1709-00005-2023-BP01 DATED 31/01/2024



APPLICABLE TO TYPE D2-G





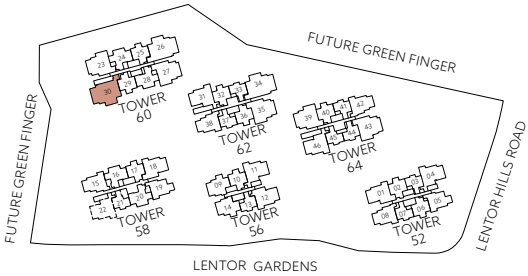
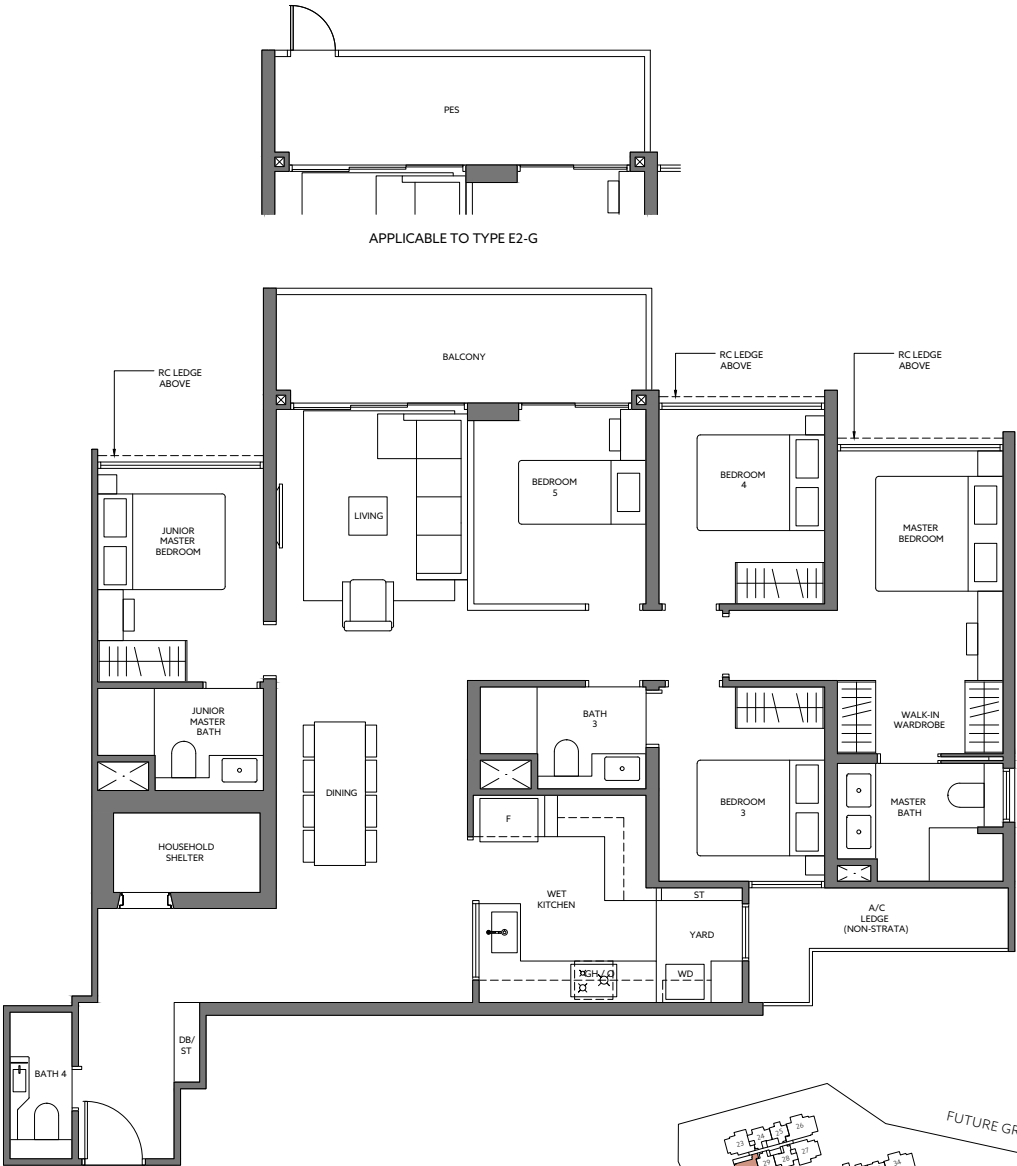
5 BEDROOM



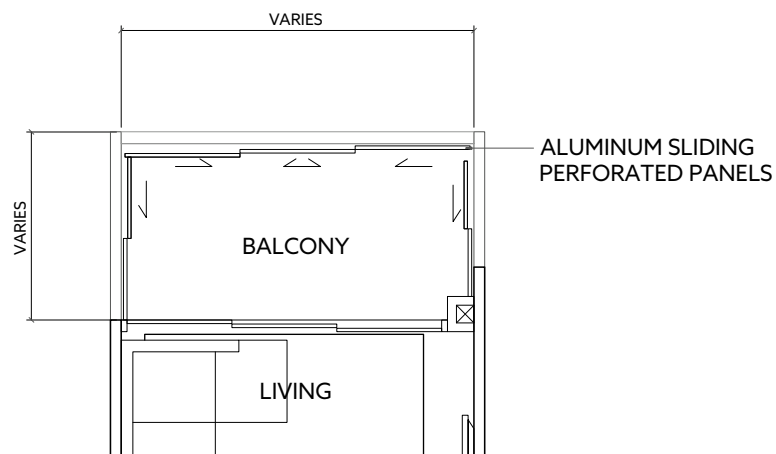
TYPE E2-G	140 sq m / 1507 sq ft		
	INCLUSIVE OF 11 SQM PES		
TOWER	UNIT		
60	#01-30		
TYPE E2	140 sq m / 1507 sq ft		
	INCLUSIVE OF 11 SQM BALCONY		
TOWER	UNIT		
60	#02-30 to #08-30 #10-30 to #16-30		

LEGEND (where applicable)	F - Fridge	WD - Washer Dryer
	P - Pantry	DB - Distribution Board
	O - Oven	ST - Store
	GH - Gas Hob	

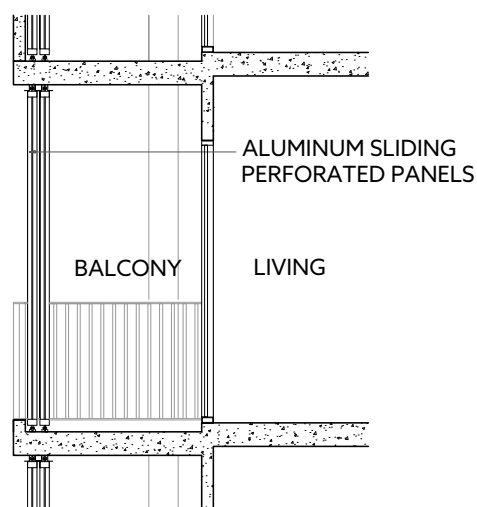
ALL PLANS ARE SUBJECTED TO AMENDMENTS AS MAY BE APPROVED BY THE RELEVANT AUTHORITIES.
FLOOR AREAS ARE APPROXIMATE MEASUREMENTS AND ARE SUBJECT TO FINAL SURVEY.
BP APPROVAL NO. A1709-00005-2023-BP01 DATED 31/01/2024



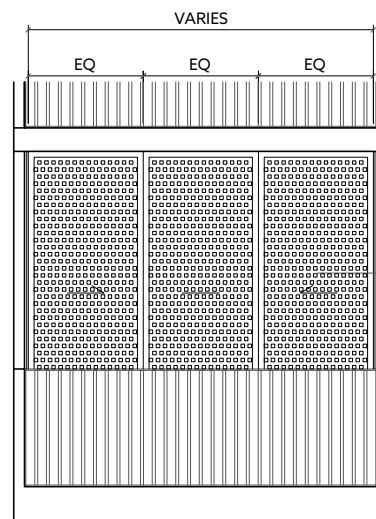
APPROVED BALCONY SCREEN DESIGN



**TYPICAL SLIDING BALCONY
SCREEN - PLAN**



**TYPICAL SLIDING BALCONY
SCREEN - SECTION**



**TYPICAL SLIDING BALCONY
SCREEN (CLOSED) - ELEVATION**

NOTES:

1. BALCONY SCREEN IS NOT PROVIDED FOR THIS DEVELOPMENT.
2. THE BALCONY SHALL NOT BE ENCLOSED UNLESS WITH THE SCREEN APPROVED BY THE RELEVANT AUTHORITIES.
3. FINAL SELECTION OF MATERIAL, COLOUR AND DETAILING OF THE SCREEN IS SUBJECT TO MCST APPROVAL.
4. APPROVAL FROM THE VENDOR OR THE MANAGEMENT CORPORATION (WHEN FORMED) IS REQUIRED BEFORE INSTALLATION.
5. OWNER MAY OPT TO PRE-INSTALL THE SCREEN.
6. ALL INSTALLATION FEES TO BE BORNE BY THE OWNER.
7. MEASUREMENTS ARE APPROXIMATE ONLY AND SUBJECT TO FINAL SURVEY.

FITTINGS

Indulge in luxury living with quality fittings that elevate your home.

hansgrohe 



A JOINT DEVELOPMENT BY



NAME OF HOUSING PROJECT: LENTOR MANSION • NAME OF HOUSING DEVELOPER: LENTOR MANSION PTE. LTD. (CO. REG. NO. 202316232E) • LICENCE NO. OF HOUSING DEVELOPER: C1473 • TENURE OF LAND: LEASEHOLD ESTATE OF 99 YEARS COMMENCING ON 11 JULY 2023 • ENCUMBRANCES ON LAND: CAVEAT IH/970950A AND MORTGAGE IH/944481J (IN ESCROW) IN FAVOUR OF OVERSEA-CHINESE BANKING CORPORATION LIMITED • LOCATION OF THE HOUSING PROJECT: LOT 5424W OF MK 20 AT LENTOR GARDENS • EXPECTED DATE OF VACANT POSSESSION: 31 DECEMBER 2029 • EXPECTED DATE OF LEGAL COMPLETION: 31 DECEMBER 2032

DISCLAIMER: THE INFORMATION AND CONTENTS HEREIN ARE CURRENT AS AT THE TIME OF PRINTING AND ARE PROVIDED ON AN "AS IS" AND "AS AVAILABLE" BASIS AND ARE NOT TO BE RELIED UPON AS STATEMENTS OR REPRESENTATIONS OF FACT, OFFERS OR WARRANTIES (WHETHER EXPRESSLY OR IMPLIEDLY) BY THE DEVELOPER OR ITS AGENTS. WHILE ALL REASONABLE CARE HAS BEEN TAKEN IN PREPARING THIS DOCUMENT, THE DEVELOPER AND ITS AGENTS SHALL NOT BE HELD RESPONSIBLE FOR ANY INACCURACIES, OMISSIONS, ERRORS, THE COMPLETENESS OF THE INFORMATION AND CONTENTS HEREIN OR ANY RELIANCE PLACED ON SUCH INFORMATION OR CONTENT. ALL RENDERINGS, ILLUSTRATIONS, PICTURES, PHOTOGRAPHS AND OTHER GRAPHIC REPRESENTATIONS AND REFERENCES ARE ARTIST'S IMPRESSION(S) ONLY AND CANNOT BE REGARDED AS REPRESENTATIONS OF FACT AND MAY BE SUBJECT TO FURTHER CHANGES AND DEVIATION AS MADE BY THE DEVELOPER OR AS REQUIRED BY THE RELEVANT AUTHORITIES. NOTHING HEREIN SHALL FORM PART OF AN OFFER OR CONTRACT OR BE CONSTRUED AS ANY REPRESENTATIONS BY THE DEVELOPER OR ITS AGENTS. THE PLANS HEREIN MAY NOT BE DRAWN TO SCALE, AND THE AREAS AND MEASUREMENTS STATED HEREIN ARE APPROXIMATE AND ARE SUBJECT TO FINAL SURVEY. THE SALE AND PURCHASE AGREEMENT EMBODIES ALL THE TERMS AND CONDITIONS BETWEEN THE DEVELOPER AND THE PURCHASER AND SUPERSEDES AND CANCELS IN ALL RESPECTS ALL PREVIOUS REPRESENTATIONS, WARRANTIES, PROMISES, INDUCEMENTS OR STATEMENTS OF INTENTION, WHETHER WRITTEN OR ORAL MADE BY THE DEVELOPER AND/OR THE DEVELOPER'S AGENT WHICH ARE NOT EMBODIED IN THE SALE AND PURCHASE AGREEMENT. THE DEVELOPER RESERVES ANY AND ALL COPYRIGHT, INTELLECTUAL PROPERTY, DESIGN AND OTHER PROPRIETARY RIGHTS IN AND TO THIS DOCUMENT (OR ANY PART THEREOF), INCLUDING ALL OR ANY PART OF THE INFORMATION, ARTWORK OR CONTENT THEREIN. NO PART OF THIS DOCUMENT SHALL BE COPIED, MODIFIED, DISTRIBUTED, REPRODUCED, STORED OR USED, IN ANY MANNER WHATSOEVER, SAVE WITH THE EXPRESS WRITTEN CONSENT OF THE DEVELOPER.