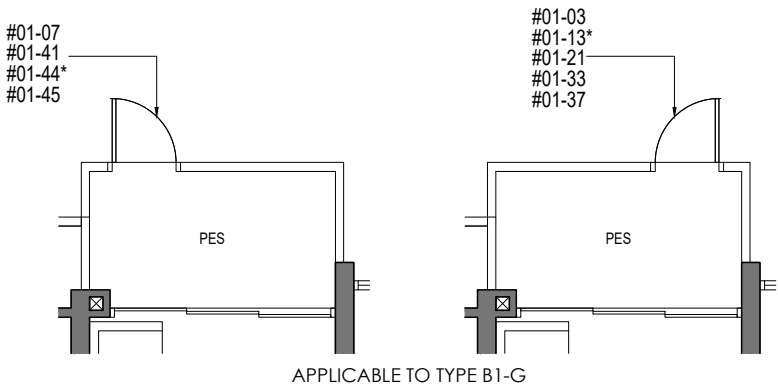


2 - BEDROOM

TYPE B1-G

49 sq m/ 527 sq ft  
INCLUSIVE OF 4 SQM PES

TOWER 52	TOWER 62
UNIT	UNIT
#01-03	#01-33
#01-07	#01-37
TOWER 56	TOWER 64
UNIT	UNIT
#01-13*	#01-41
TOWER 58	#01-44*
UNIT	#01-45
#01-21	

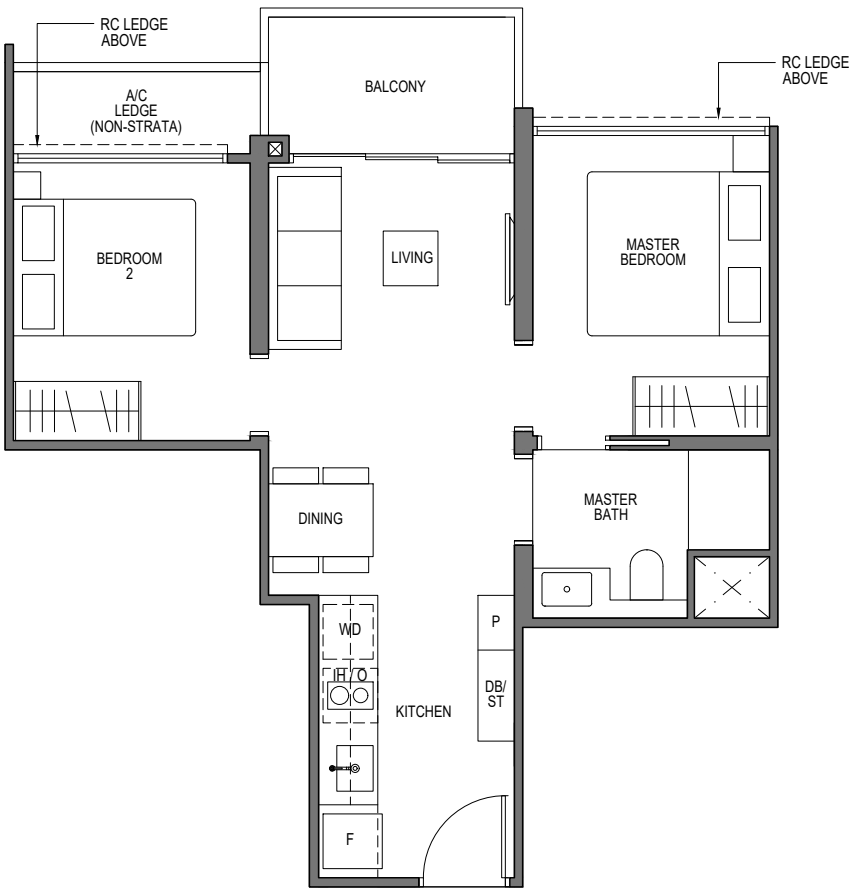


TYPE B1

49 sq m/ 527 sq ft  
INCLUSIVE OF 4 SQM BALCONY

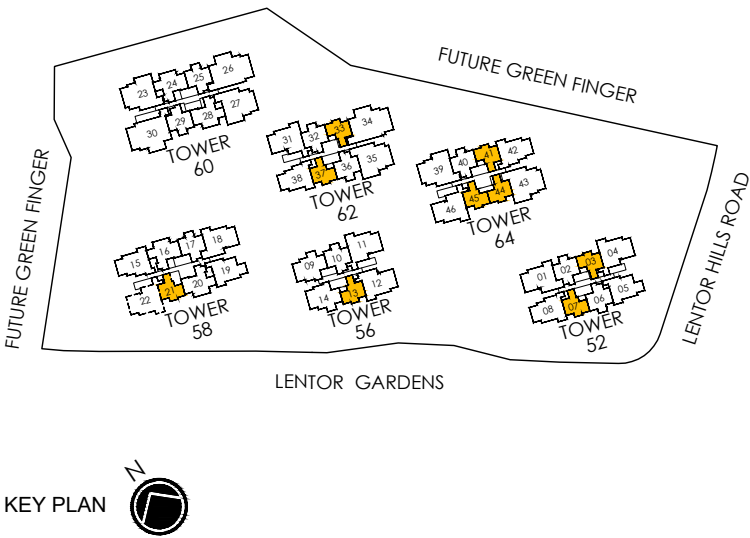
TOWER 52	TOWER 62
UNIT	UNIT
#02-03 TO #08-03	#02-33 TO #08-33
#02-07 TO #08-07	#10-33 TO #16-33
TOWER 56	#02-37 TO #08-37
UNIT	#10-37 TO #16-37
#02-13* TO #08-13*	TOWER 64
TOWER 58	UNIT
UNIT	#02-41 TO #08-41
#02-21 TO #08-21	#10-41 TO #16-41
	#02-44* TO #08-44*
	#10-44* TO #16-44*
	#02-45 TO #08-45
	#10-45 TO #16-45

\* MIRROR IMAGE



LEGEND (where applicable) :

F - Fridge	WD - Washer Dryer
P - Pantry	DB - Distribution Board
O - Oven	ST - Store
IH - Induction Hob	



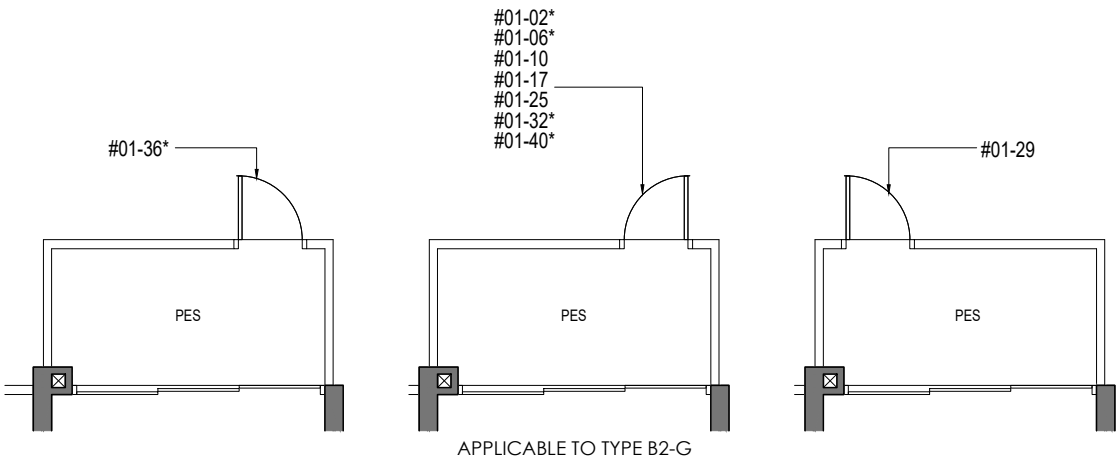
All plans are subjected to amendments as may be approved by the relevant authorities. Floor areas are approximate measurements and are subjected to final survey.  
BP Approval No. A1709-00005-2023-BP01 dated 31/01/2024

2 - BEDROOM

TYPE B2-G

61 sq m/ 657 sq ft  
INCLUSIVE OF 5 SQM PES

TOWER 52	TOWER 60
UNIT	UNIT
#01-02*	#01-25
#01-06*	#01-29
TOWER 56	TOWER 62
UNIT	UNIT
#01-10	#01-32*
TOWER 58	#01-36*
UNIT	TOWER 64
#01-17	UNIT
	#01-40*

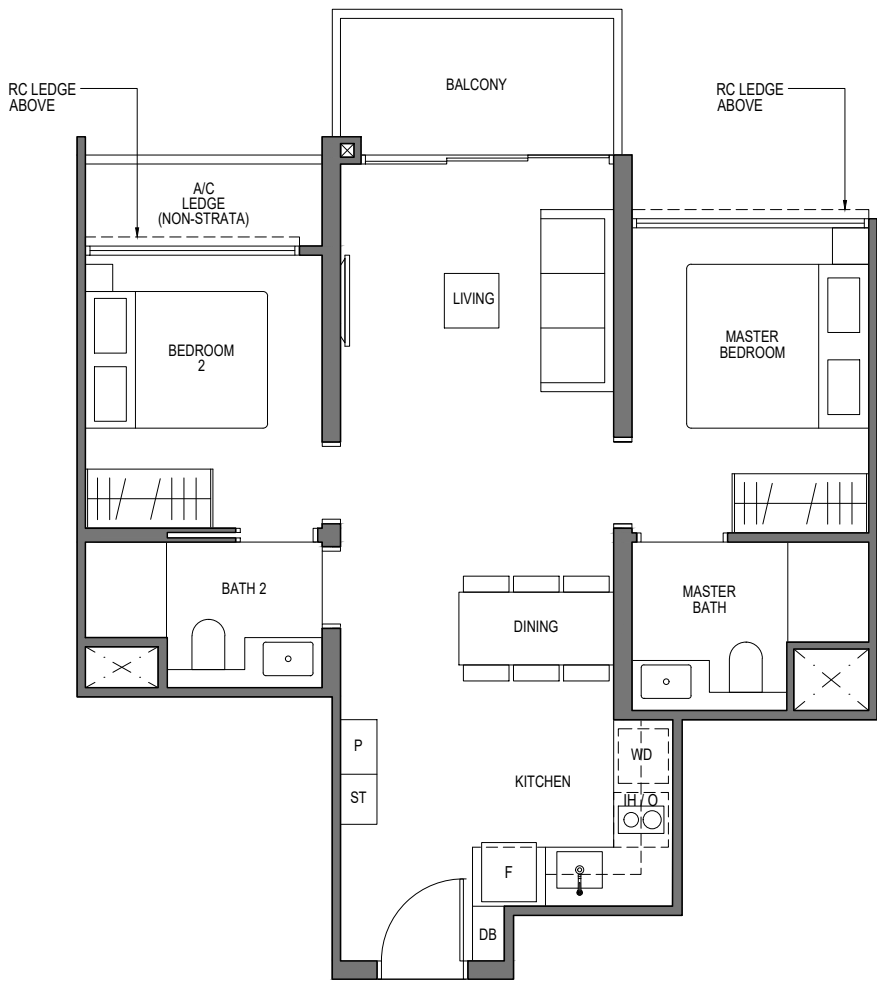


TYPE B2

61 sq m/ 657 sq ft  
INCLUSIVE OF 5 SQM BALCONY

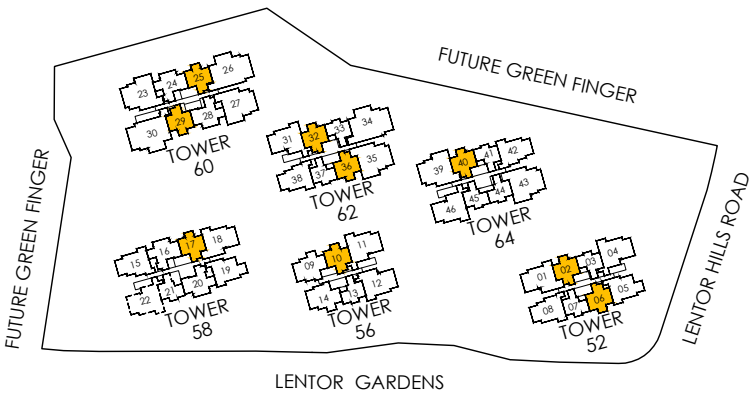
TOWER 52	TOWER 60
UNIT	UNIT
#02-02* TO #08-02*	#02-25 TO #08-25
#02-06* TO #08-06*	#10-25 TO #16-25
TOWER 56	#02-29 TO #08-29
UNIT	#10-29 TO #16-29
#02-10 TO #08-10	TOWER 62
TOWER 58	UNIT
#02-17 TO #08-17	#02-32* TO #08-32*
	#10-32* TO #16-32*
	#02-36* TO #08-36*
	#10-36* TO #16-36*
	TOWER 64
	UNIT
	#02-40* TO #08-40*
	#10-40* TO #16-40*

\* MIRROR IMAGE



LEGEND (where applicable) :

F - Fridge	WD - Washer Dryer
P - Pantry	DB - Distribution Board
O - Oven	ST - Store
IH - Induction Hob	



All plans are subjected to amendments as may be approved by the relevant authorities. Floor areas are approximate measurements and are subjected to final survey.  
BP Approval No. A1709-00005-2023-BP01 dated 31/01/2024

# 3 - BEDROOM

## TYPE C1-G

73 sq m/ 786 sq ft

INCLUSIVE OF 5 SQM PES

TOWER 58

UNIT

#01-16

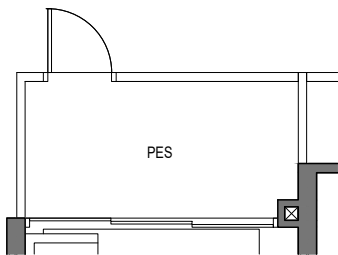
#01-20

TOWER 60

UNIT

#01-24

#01-28



APPLICABLE TO TYPE C1-G

## TYPE C1

73 sq m/ 786 sq ft

INCLUSIVE OF 5 SQM BALCONY

TOWER 58

UNIT

#02-16 TO #08-16

#02-20 TO #08-20

TOWER 60

UNIT

#02-24 TO #08-24

#10-24 TO #16-24

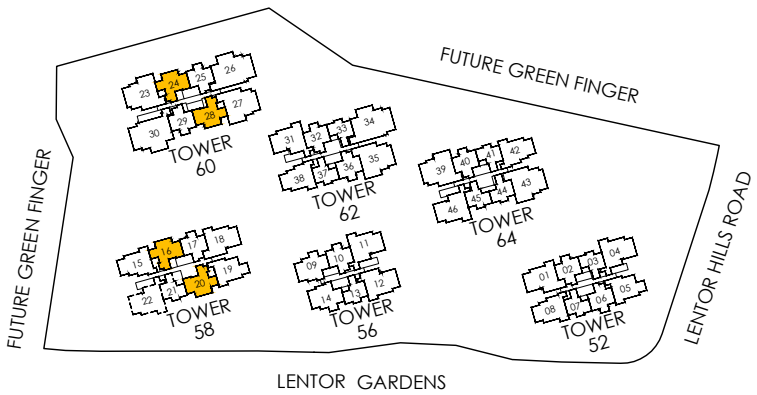
#02-28 TO #08-28

#10-28 TO #16-28



LEGEND (where applicable) :

- |                    |                         |
|--------------------|-------------------------|
| F - Fridge         | WD - Washer Dryer       |
| P - Pantry         | DB - Distribution Board |
| O - Oven           | ST - Store              |
| IH - Induction Hob |                         |



All plans are subjected to amendments as may be approved by the relevant authorities. Floor areas are approximate measurements and are subjected to final survey.  
BP Approval No. A1709-00005-2023-BP01 dated 31/01/2024

# 3 - BEDROOM

## TYPE C2-G

76 sq m/ 818 sq ft

INCLUSIVE OF 5 SQM PES

TOWER 52

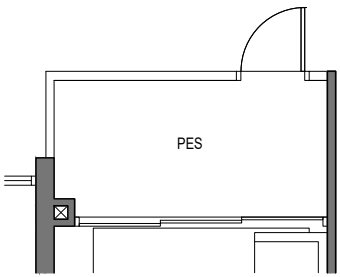
UNIT

#01-05

TOWER 58

UNIT

#01-19



APPLICABLE TO TYPE C2-G

## TYPE C2

76 sq m/ 818 sq ft

INCLUSIVE OF 5 SQM BALCONY

TOWER 52

UNIT

#02-05 TO #08-05

TOWER 58

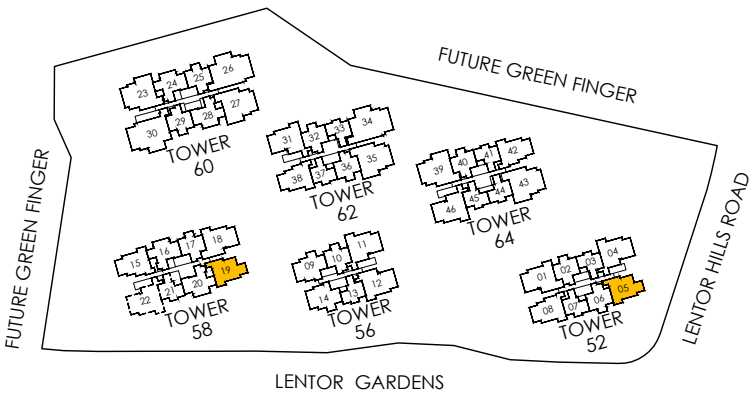
UNIT

#02-19 TO #08-19



LEGEND (where applicable) :

- |                    |                         |
|--------------------|-------------------------|
| F - Fridge         | WD - Washer Dryer       |
| P - Pantry         | DB - Distribution Board |
| O - Oven           | ST - Store              |
| IH - Induction Hob |                         |



All plans are subjected to amendments as may be approved by the relevant authorities. Floor areas are approximate measurements and are subjected to final survey.  
BP Approval No. A1709-00005-2023-BP01 dated 31/01/2024

# 3 - BEDROOM

## TYPE C3-G

80 sq m/ 861 sq ft  
INCLUSIVE OF 5 SQM PES

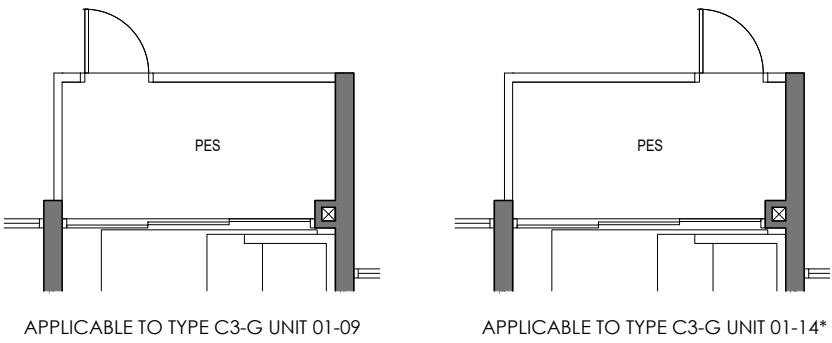
TOWER 56  
UNIT  
#01-09  
#01-14\*

## TYPE C3

80 sq m/ 861 sq ft  
INCLUSIVE OF 5 SQM BALCONY

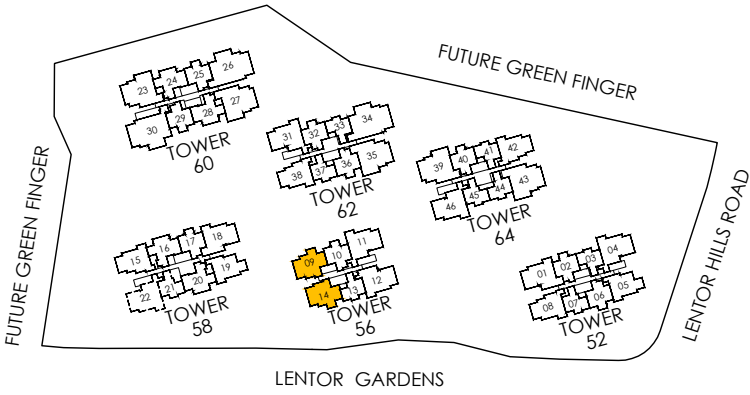
TOWER 56  
UNIT  
#02-09 TO #08-09  
#02-14\* TO #08-14\*

\* MIRROR IMAGE



### LEGEND (where applicable) :

- |              |                         |
|--------------|-------------------------|
| F - Fridge   | WD - Washer Dryer       |
| P - Pantry   | DB - Distribution Board |
| O - Oven     | ST - Store              |
| GH - Gas Hob |                         |



All plans are subjected to amendments as may be approved by the relevant authorities. Floor areas are approximate measurements and are subjected to final survey.  
BP Approval No. A1709-00005-2023-BP01 dated 31/01/2024

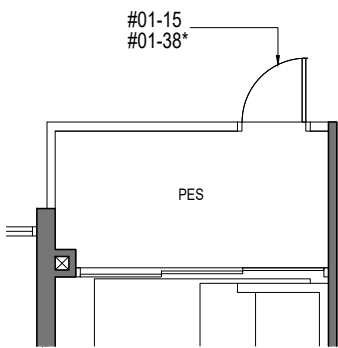
3 - BEDROOM

TYPE C4-G

84 sq m/ 904 sq ft  
INCLUSIVE OF 5 SQM PES

TOWER 58  
UNIT  
#01-15

TOWER 62  
UNIT  
#01-38\*



APPLICABLE TO TYPE C4-G

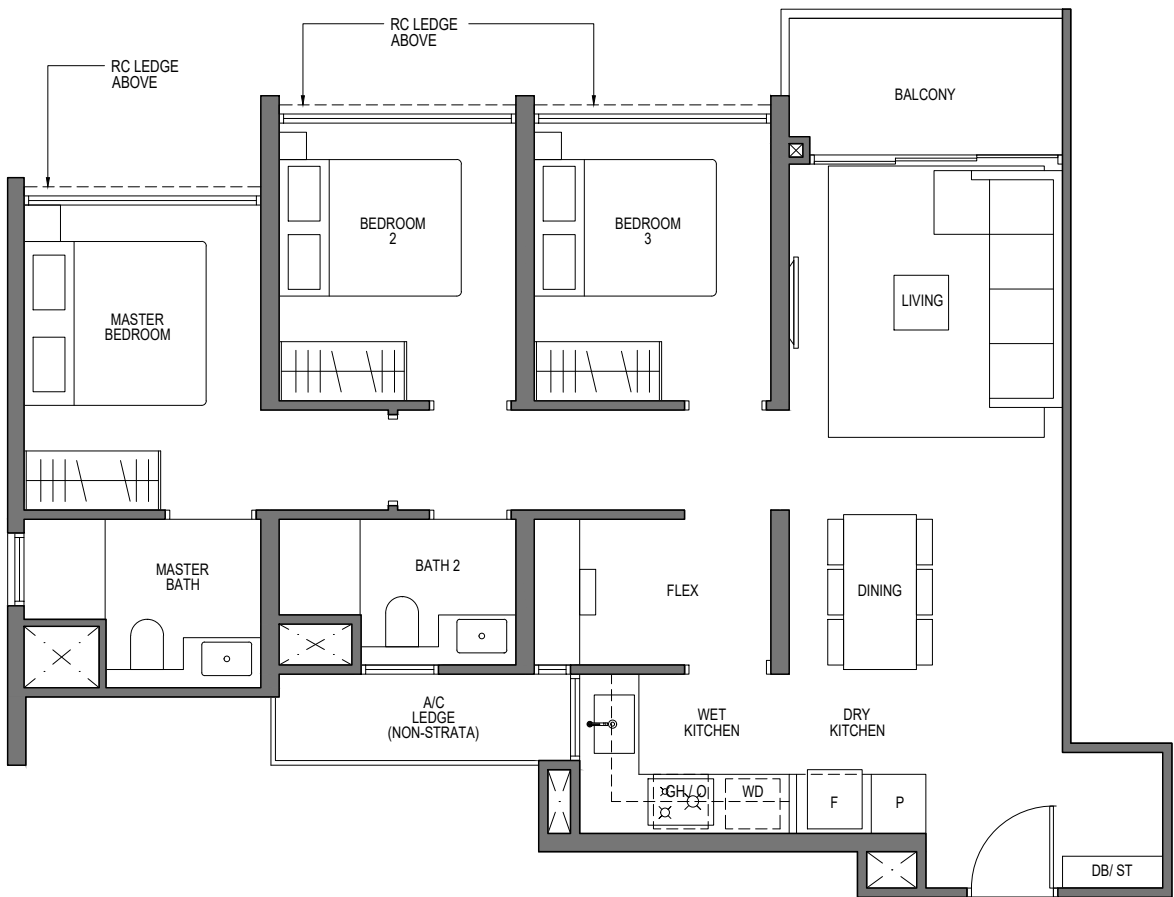
TYPE C4

84 sq m/ 904 sq ft  
INCLUSIVE OF 5 SQM BALCONY

TOWER 58  
UNIT  
#02-15 TO #08-15

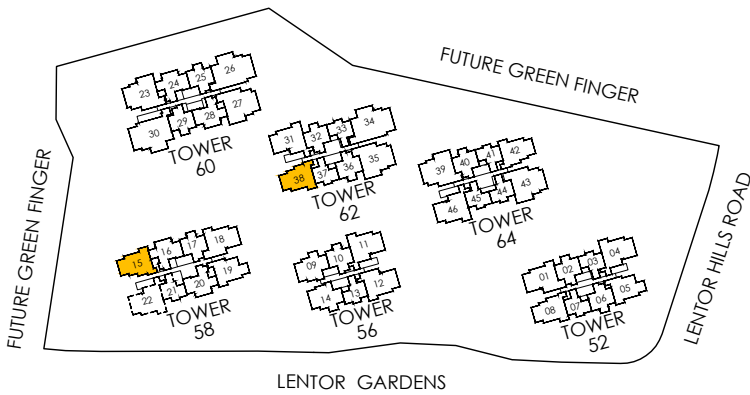
TOWER 62  
UNIT  
#02-38\* TO #08-38\*  
#10-38\* TO #16-38\*

\* MIRROR IMAGE



LEGEND (where applicable) :

- |              |                         |
|--------------|-------------------------|
| F - Fridge   | WD - Washer Dryer       |
| P - Pantry   | DB - Distribution Board |
| O - Oven     | ST - Store              |
| GH - Gas Hob |                         |



All plans are subjected to amendments as may be approved by the relevant authorities. Floor areas are approximate measurements and are subjected to final survey.  
BP Approval No. A1709-00005-2023-BP01 dated 31/01/2024

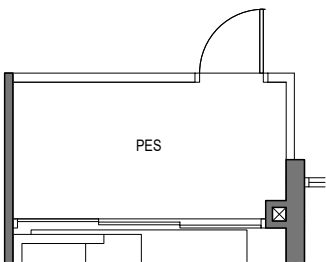
3 - BEDROOM

TYPE C5-G

84 sq m/ 904 sq ft  
INCLUSIVE OF 5 SQM PES

TOWER 52  
UNIT  
#01-08

TOWER 64  
UNIT  
#01-42



APPLICABLE TO TYPE C5-G

TYPE C5

84 sq m/ 904 sq ft  
INCLUSIVE OF 5 SQM BALCONY

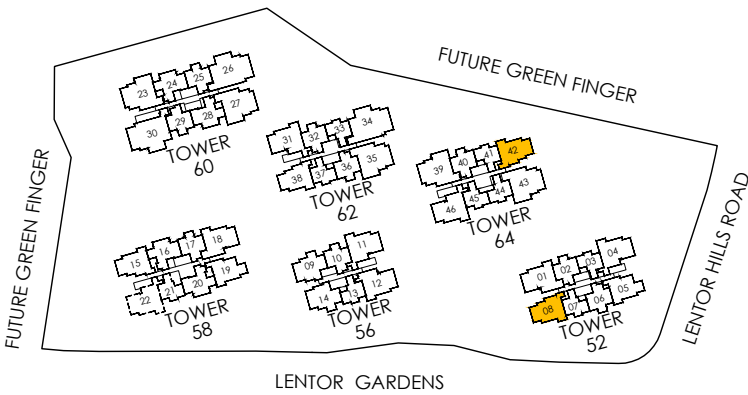
TOWER 52  
UNIT  
#02-08 TO #08-08

TOWER 64  
UNIT  
#02-42 TO #08-42  
#10-42 TO #16-42



LEGEND (where applicable) :

- |              |                         |
|--------------|-------------------------|
| F - Fridge   | WD - Washer Dryer       |
| P - Pantry   | DB - Distribution Board |
| O - Oven     | ST - Store              |
| GH - Gas Hob |                         |



All plans are subjected to amendments as may be approved by the relevant authorities. Floor areas are approximate measurements and are subjected to final survey.  
BP Approval No. A1709-00005-2023-BP01 dated 31/01/2024

3 - BEDROOM

TYPE C6-G

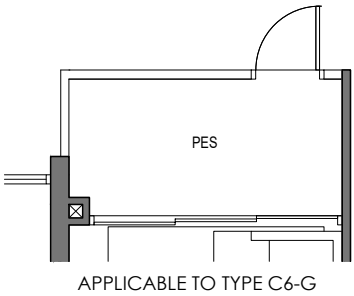
92 sq m/ 990 sq ft  
INCLUSIVE OF 5 SQM PES

TOWER 56  
UNIT  
#01-12

TYPE C6

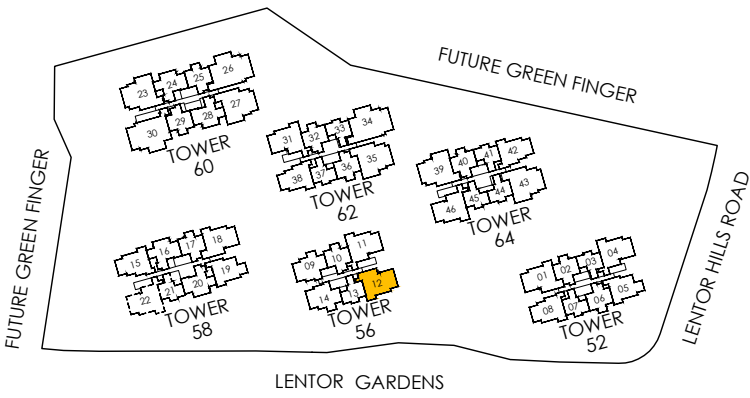
92 sq m/ 990 sq ft  
INCLUSIVE OF 5 SQM BALCONY

TOWER 56  
UNIT  
#02-12 TO #08-12



LEGEND (where applicable) :

- |              |                         |
|--------------|-------------------------|
| F - Fridge   | WD - Washer Dryer       |
| P - Pantry   | DB - Distribution Board |
| O - Oven     | ST - Store              |
| GH - Gas Hob |                         |



All plans are subjected to amendments as may be approved by the relevant authorities. Floor areas are approximate measurements and are subjected to final survey.  
BP Approval No. A1709-00005-2023-BP01 dated 31/01/2024

3 - BEDROOM

TYPE C7-G

94 sq m/ 1012 sq ft

INCLUSIVE OF 5 SQM PES

TOWER 52

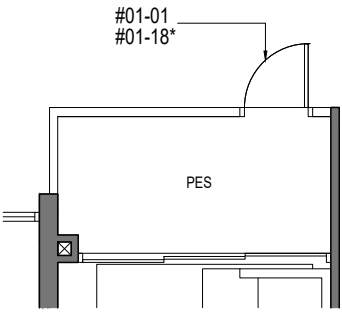
UNIT

#01-01

TOWER 58

UNIT

#01-18\*



APPLICABLE TO TYPE C7-G

TYPE C7

94 sq m/ 1012 sq ft

INCLUSIVE OF 5 SQM BALCONY

TOWER 52

UNIT

#02-01 TO #08-01

TOWER 58

UNIT

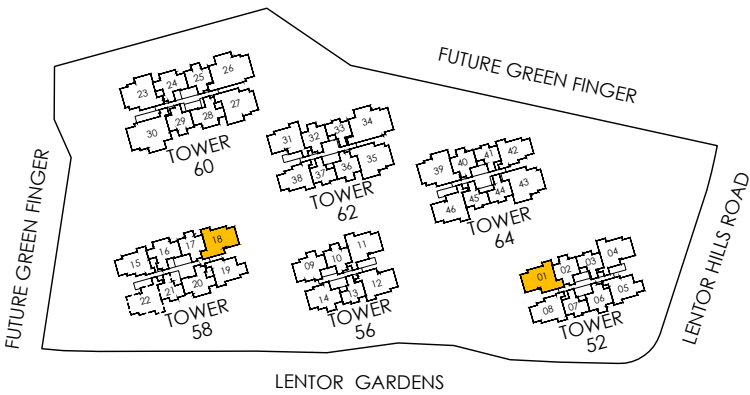
#02-18\* TO #08-18\*

\* MIRROR IMAGE



LEGEND (where applicable) :

- |              |                         |
|--------------|-------------------------|
| F - Fridge   | WD - Washer Dryer       |
| P - Pantry   | DB - Distribution Board |
| O - Oven     | ST - Store              |
| GH - Gas Hob |                         |



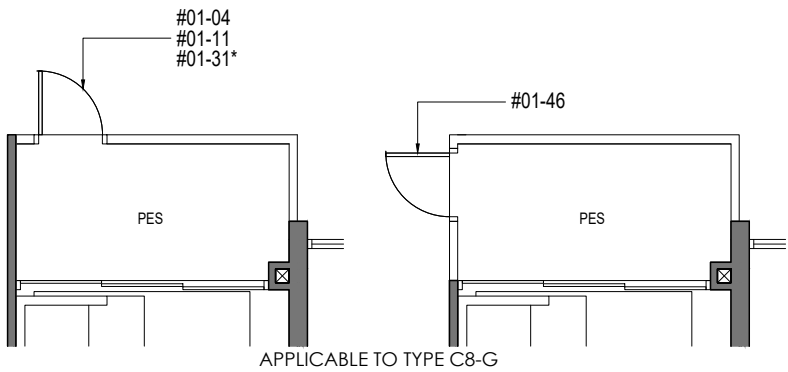
All plans are subjected to amendments as may be approved by the relevant authorities. Floor areas are approximate measurements and are subjected to final survey.  
BP Approval No. A1709-00005-2023-BP01 dated 31/01/2024

3 - BEDROOM

TYPE C8-G

95 sq m/ 1023 sq ft  
INCLUSIVE OF 5 SQM PES

TOWER 52	TOWER 62
UNIT	UNIT
#01-04	#01-31*
TOWER 56	TOWER 64
UNIT	UNIT
#01-11	#01-46



TYPE C8

95 sq m/ 1023 sq ft  
INCLUSIVE OF 5 SQM BALCONY

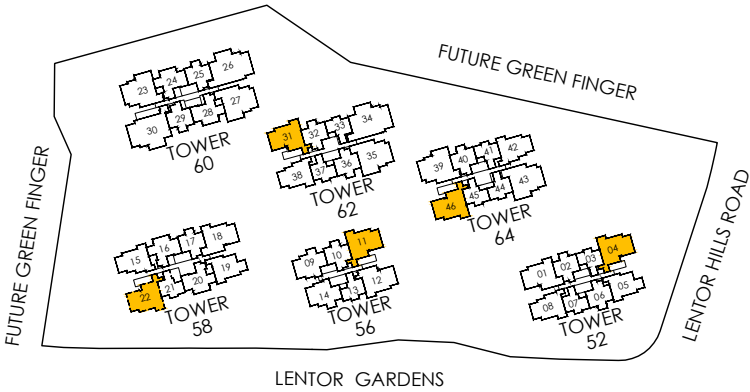
TOWER 52	TOWER 62
UNIT	UNIT
#02-04 TO #08-04	#02-31* TO #08-31* #10-31* TO #16-31*
TOWER 56	TOWER 64
UNIT	UNIT
#02-11 TO #08-11	#02-46 TO #08-46 #10-46 TO #16-46
TOWER 58	
UNIT	
#04-22 TO #08-22	

\* MIRROR IMAGE



LEGEND (where applicable) :

F - Fridge	WD - Washer Dryer
P - Pantry	DB - Distribution Board
O - Oven	ST - Store
GH - Gas Hob	



All plans are subjected to amendments as may be approved by the relevant authorities. Floor areas are approximate measurements and are subjected to final survey.  
BP Approval No. A1709-00005-2023-BP01 dated 31/01/2024

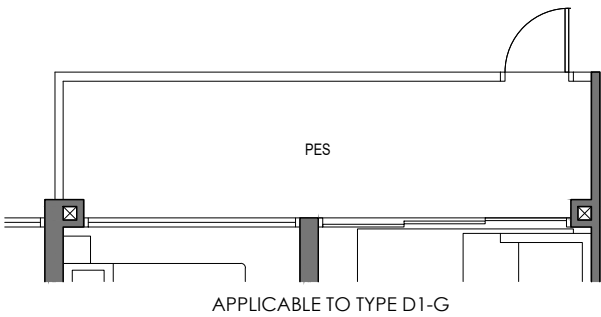
4 - BEDROOM

TYPE D1-G

114 sq m/ 1227 sq ft  
INCLUSIVE OF 9 SQM PES

TOWER 60  
UNIT  
#01-23

TOWER 64  
UNIT  
#01-39



APPLICABLE TO TYPE D1-G

TYPE D1

114 sq m/ 1227 sq ft  
INCLUSIVE OF 9 SQM BALCONY

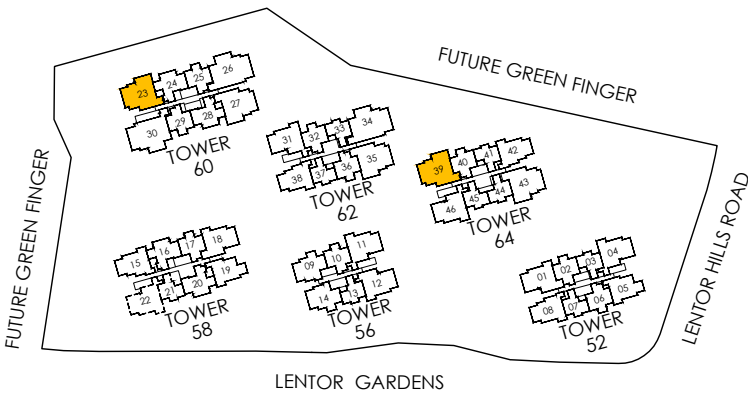
TOWER 60  
UNIT  
#02-23 TO #08-23  
#10-23 TO #16-23

TOWER 64  
UNIT  
#02-39 TO #08-39  
#10-39 TO #16-39



LEGEND (where applicable) :

- |              |                         |
|--------------|-------------------------|
| F - Fridge   | WD - Washer Dryer       |
| P - Pantry   | DB - Distribution Board |
| O - Oven     | ST - Store              |
| GH - Gas Hob |                         |



All plans are subjected to amendments as may be approved by the relevant authorities. Floor areas are approximate measurements and are subjected to final survey.  
BP Approval No. A1709-00005-2023-BP01 dated 31/01/2024

# 4 - BEDROOM

## TYPE D2-G

114 sq m/ 1227 sq ft

INCLUSIVE OF 9 SQM PES

TOWER 60

UNIT

#01-27

TOWER 62

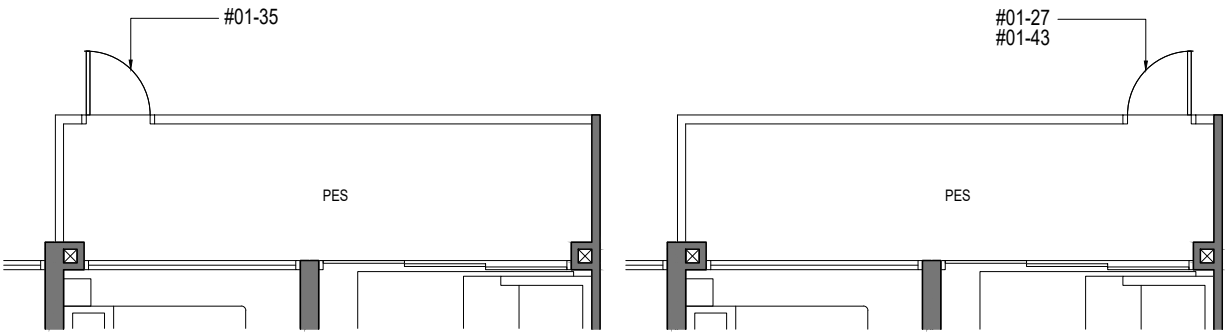
UNIT

#01-35

TOWER 64

UNIT

#01-43



APPLICABLE TO TYPE D2-G

## TYPE D2

114 sq m/ 1227 sq ft

INCLUSIVE OF 9 SQM BALCONY

TOWER 60

UNIT

#02-27 TO #08-27

#10-27 TO #16-27

TOWER 62

UNIT

#02-35 TO #08-35

#10-35 TO #16-35

TOWER 64

UNIT

#02-43 TO #08-43

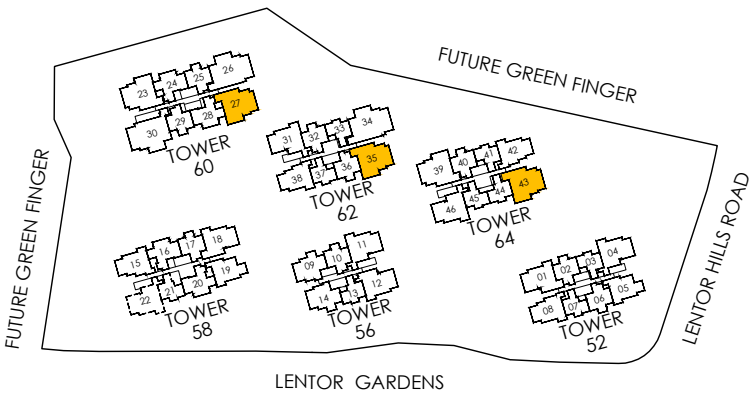
#10-43 TO #16-43



0 1 3 5m

LEGEND (where applicable) :

- |              |                         |
|--------------|-------------------------|
| F - Fridge   | WD - Washer Dryer       |
| P - Pantry   | DB - Distribution Board |
| O - Oven     | ST - Store              |
| GH - Gas Hob |                         |



All plans are subjected to amendments as may be approved by the relevant authorities. Floor areas are approximate measurements and are subjected to final survey.  
BP Approval No. A1709-00005-2023-BP01 dated 31/01/2024

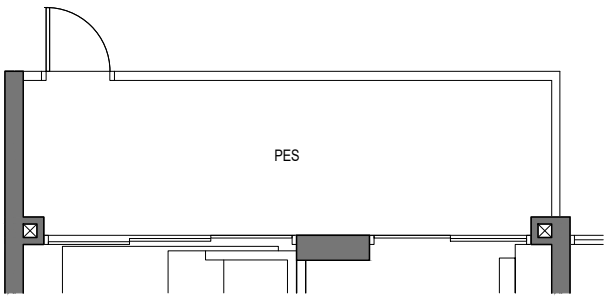
5 - BEDROOM

TYPE E1-G

138 sq m/ 1485 sq ft  
INCLUSIVE OF 11 SQM PES

TOWER 60  
UNIT  
#01-26

TOWER 62  
UNIT  
#01-34



APPLICABLE TO TYPE E1-G

TYPE E1

138 sq m/ 1485 sq ft  
INCLUSIVE OF 11 SQM BALCONY

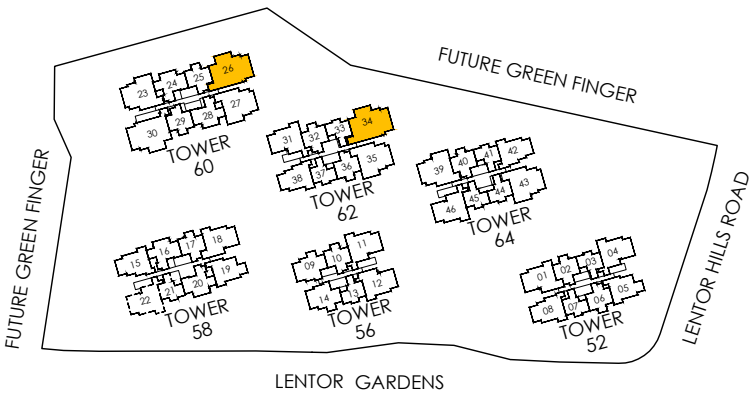
TOWER 60  
UNIT  
#02-26 TO #08-26  
#10-26 TO #16-26

TOWER 62  
UNIT  
#02-34 TO #08-34  
#10-34 TO #16-34



LEGEND (where applicable) :

- |              |                         |
|--------------|-------------------------|
| F - Fridge   | WD - Washer Dryer       |
| P - Pantry   | DB - Distribution Board |
| O - Oven     | ST - Store              |
| GH - Gas Hob |                         |



All plans are subjected to amendments as may be approved by the relevant authorities. Floor areas are approximate measurements and are subjected to final survey.  
BP Approval No. A1709-00005-2023-BP01 dated 31/01/2024

5 - BEDROOM

TYPE E2-G

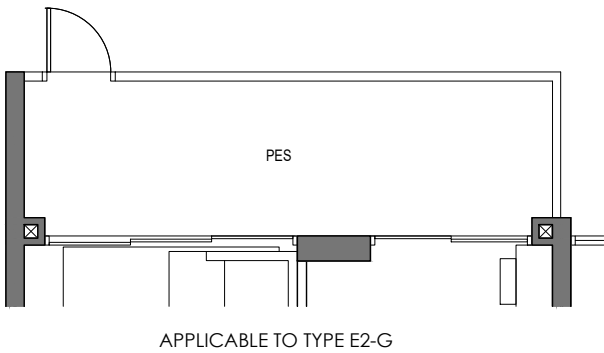
140 sq m/ 1507 sq ft  
INCLUSIVE OF 11 SQM PES

TOWER 60  
UNIT  
#01-30

TYPE E2

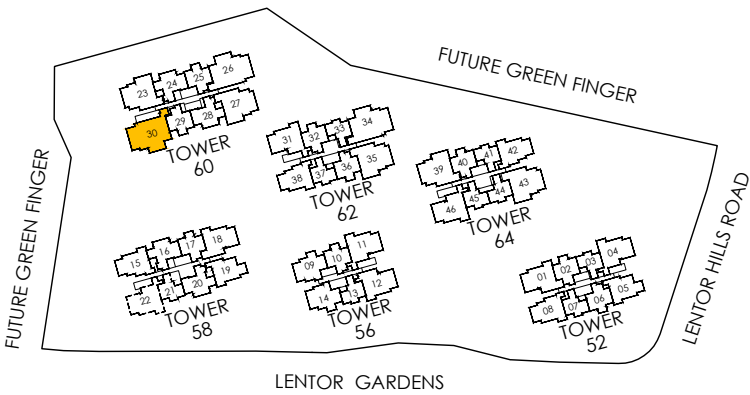
140 sq m/ 1507 sq ft  
INCLUSIVE OF 11 SQM BALCONY

TOWER 60  
UNIT  
#02-30 TO #08-30  
#10-30 TO #16-30



LEGEND (where applicable) :

- |              |                         |
|--------------|-------------------------|
| F - Fridge   | WD - Washer Dryer       |
| P - Pantry   | DB - Distribution Board |
| O - Oven     | ST - Store              |
| GH - Gas Hob |                         |



All plans are subjected to amendments as may be approved by the relevant authorities. Floor areas are approximate measurements and are subjected to final survey.  
BP Approval No. A1709-00005-2023-BP01 dated 31/01/2024